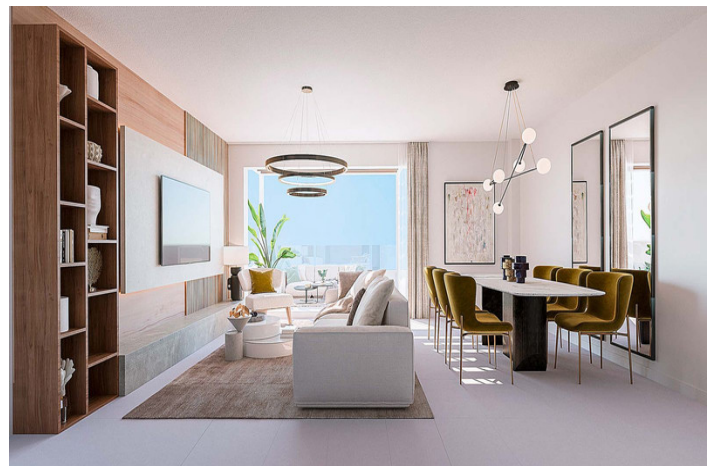
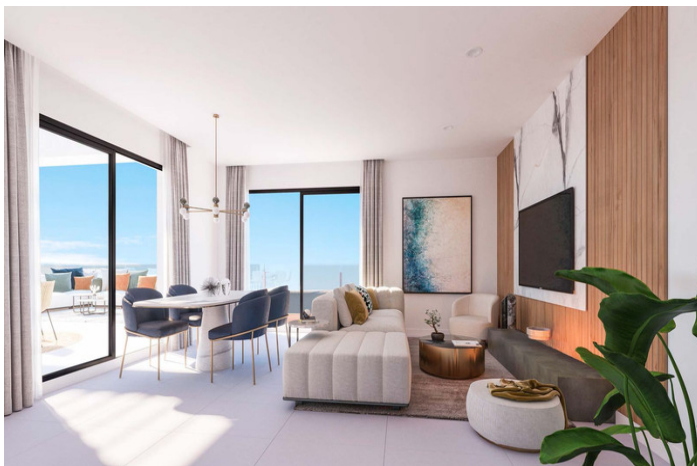


## Apartamento planta media en venta en Benalmádena, Benalmádena

435.000 €

Referencia: R4632589    Dormitorios: 2    Baños: 2    Construido: 82m<sup>2</sup>    Terraza: 28m<sup>2</sup>





## Costa del Sol, Benalmádena

New to the market! Delivery summer 2025

This development is an exclusive private development located in a privileged location in Benalmádena. Thanks to its elevated location, all homes will enjoy incredible panoramic views of the sea and the coast. The terraced layout of this development overlooking the Mediterranean Sea means that each and every one of the 49 apartments and 2 townhouses enjoys bright rooms thanks to natural light.

2 parking spaces and 1 storage room.

### Payment Terms:

€6,000 Reservation

30% + VAT within 30 days on signing private contract

70% + VAT on completion

### About Us

IPP Spain is a family run real estate agency which has been working on the Costa del Sol for 20 years. We look after clients wanting to buy property from Malaga all the way to Estepona - from studios and apartments to multi-million euro villas. Some people are looking for their dream second home, others want a lucrative holiday rental property and many are now relocating to Spain for a change in lifestyle.

We are a mix of Spanish and English speakers and our aim is to make the property buying experience in Spain a pleasure for our clients.

Our aim is to help with every step of the buying process, including support finding Spanish mortgages and connecting them with our own lawyers who offer a special discount for our clients.

We also offer a property management service for those clients who wish to rent out their properties for winter or long-term rentals.

IPP Spain has access to all the new build projects, saving you a lot of time and being able to guide you with our market knowledge. Buying directly from the developer will not save you any money.

## Características:

### Características

Ascensor  
Terraza privada  
Trastero  
Armarios empotrados  
Gimnasio  
Solárium  
Acceso para personas con movilidad reducida

### Condición

Excelente

### Jardín

Comunal

### Control climatico

Aire acondicionado  
Calefacción central

### Piscina

Comunal

### Seguridad

Complejo cerrado

### Vistas

Mar  
Montaña

### Cocina

Totalmente equipada

### Estacionamiento

Subterráneo  
Garaje  
Privado