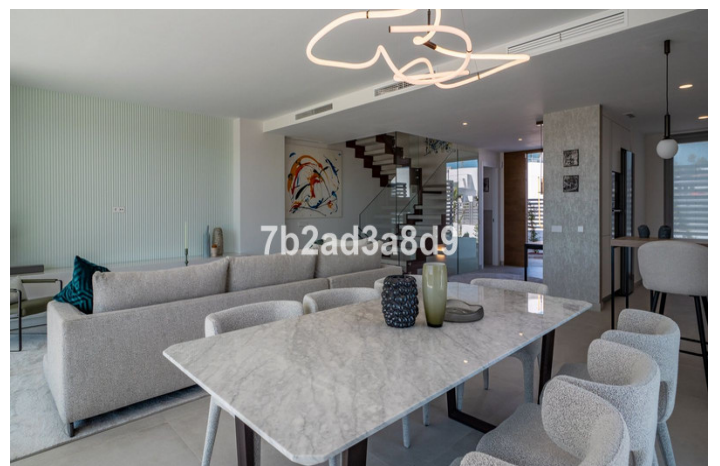


Semi-Detached House for sale in Guadalmina Alta,
Marbella

1,380,000 €

Reference: R4725802 Bedrooms: 3 Bathrooms: 3 Plot Size: 289m² Build Size: 259m² Terrace: 30m²



Costa del Sol, Guadalmina Alta

New and spectacular luxury villa located close to Guadalmina Golf Club and walking distance to San Pedro city centre being able to enjoy all the luxuries of the city without giving up the tranquillity and nature. Walk to the centre of San Pedro de Alcántara and Boulevard in a beautiful stroll or enjoy the best leisure offer in Puerto Banús just a few minutes drive away.

Located next to Guadalmina Golf, this spacious home has been designed by the renowned architectural studio González & Jacobson, the design envisages a 3-bedroom home with fabulous open views. In addition, the spacious terraces and spectacular solarium invite you to enjoy a pleasant candlelit dinner or to enjoy the Mediterranean sun.

The property sits on a 289 m2 built on plots.

The property stands out for its enormous living room, with a free height of 3 meters, designer kitchen open to the living room and equipped with NEFF appliances, exceeding the size between living room and kitchen, 55 m2. The qualities are excellent including underfloor heating throughout the house by aerotermia, large format porcelain floors, exterior carpentry brand Cortizo, Geberit toilets, Ritmonio taps, Jung brand mechanisms and basic home automation.

This beautiful villa is part of a gated community with swimming pools for adults and children, beautiful gardens and a co-living space with gym and relaxation area. The basement is customizable according to the needs of your family, it has a garage for 2 cars and a multipurpose area where you can place an extra bedroom, a cinema room, gym, studio, etc... This is certainly the ideal property to enjoy your holidays on the Costa del Sol or as a family residence.

Features:**Features**

Covered Terrace
Near Transport
Private Terrace
Satellite TV
Storage Room
Ensuite Bathroom
Double Glazing
Utility Room
Gym
Basement

Views

Garden
Pool

Pool

Communal
Children`s Pool

Security

Gated Complex

Category

Holiday Homes
Golf
Contemporary

Orientation

South West

Setting

Urbanisation
Close To Shops
Close To Town
Close To Schools

Kitchen

Fully Fitted
Kitchen-Lounge

Parking

Garage
More Than One

Climate Control

Air Conditioning
Cold A/C
Hot A/C
U/F Heating
U/F/H Bathrooms
Central Heating

Condition

New Construction

Garden

Communal
Private

Utilities

Electricity
Drinkable Water