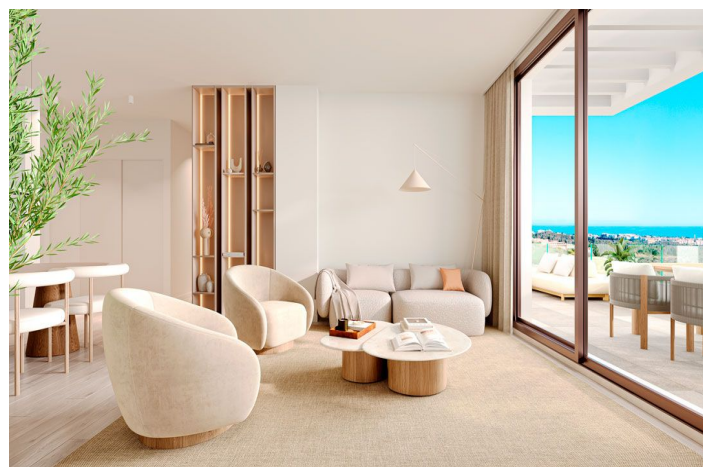
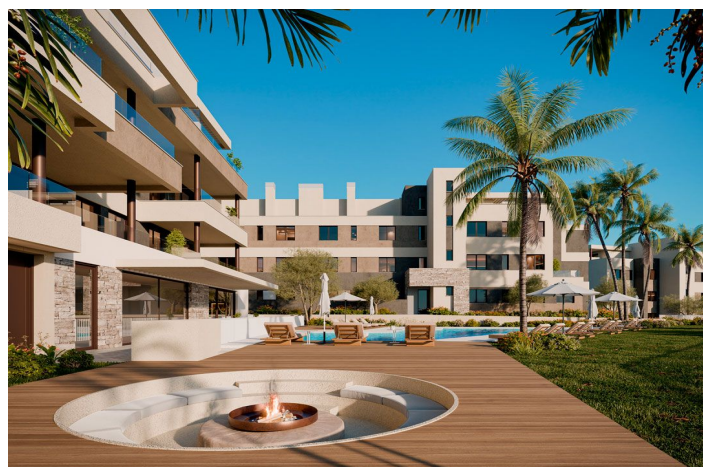
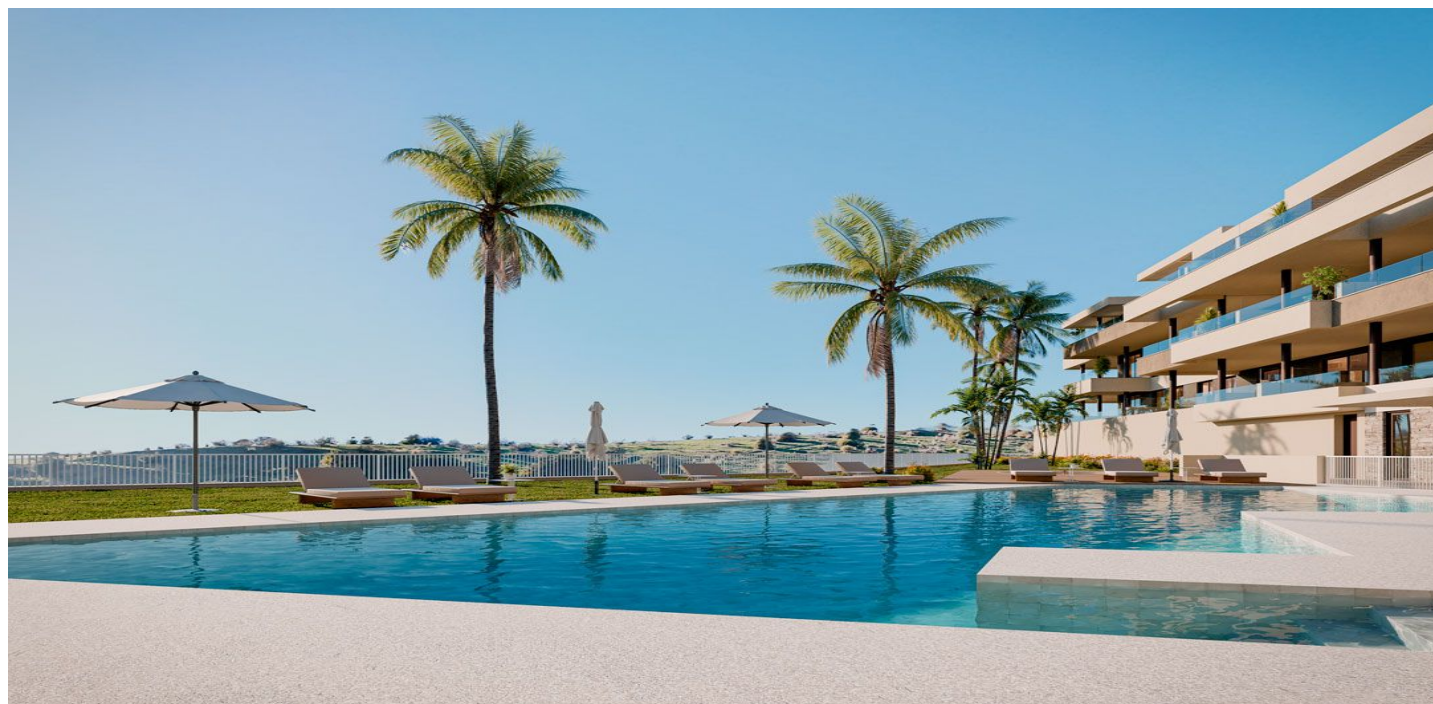




Ground Floor Apartment for sale in Mijas Pueblo, Mijas 382,000 - 546,000 €

Reference: R4750300 Bedrooms: 2 - 3 Bathrooms: 2 Build Size: 92m² - 100m² Terrace: 15m² - 85m²





Costa del Sol, Mijas Pueblo

Our company is a real estate investment and development group with 80 years of experience, committed to people, integrity, innovation, and the environment, creating value for all its stakeholders. It has a unique business model through which it contributes to the creation of life projects, inspiring and improving people's well-being. New homes in Mijas! This development is a modern residential of 75 new homes in Mijas, designed to enjoy a warm and balanced lifestyle. A project surrounded by nature, with incredible sea and mountain views and with common areas designed for relaxation, entertainment, sports and wellness. The residential complex consists of 2 and 3 bedroom apartments with incredible terraces of up to 100 m2 and first floors with gardens. All rooms have been designed to create relaxing environments, with an unbeatable orientation to maximize the views of the Mediterranean Sea and natural lighting and ventilation. The kitchens come equipped with appliances including: induction hob, refrigerator, washing machine, dishwasher, extractor hood, oven and microwave. In its common areas we find a swimming pool in the central area with a chillout area, designed to enjoy and relax. It also has a gym, a social club and barbecue area and picnic areas for meetings and celebrations with friends or family. All surrounded by more than 13,000 m2 of gardens that invite you to disconnect. This development is in a privileged location, less than 10 minutes from the beaches and only 20 minutes from Malaga airport, with easy access and excellent communications. At 800 meters is developed the new great Park of the Costa del Sol, a green lung with large gardens and a wide range of leisure and entertainment with outdoor amphitheater, a running track, bike path, skating, skate park, a navigable lake and climbing wall.



Features:

Features

Covered Terrace

Private Terrace

Barbeque

Gym

Pool

Communal

Category

New Development

Views

Garden

Pool

Kitchen

Fully Fitted

Condition

New Construction

Garden

Communal