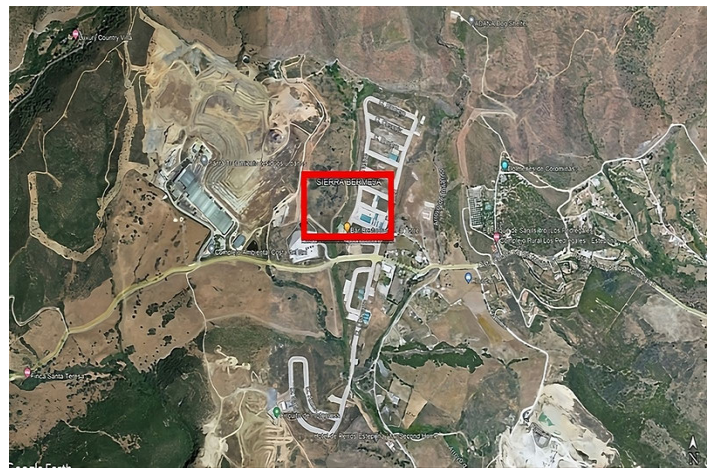
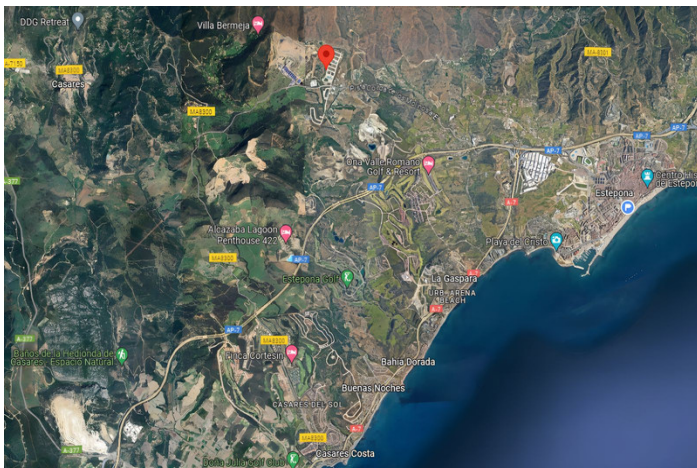


Residential Plot for sale in Casares, Casares

85,000 €

Reference: R4790086 Plot Size: 358m²



Costa del Sol, Casares

The unbuilt plot, located on Taraje Street, in the Los Pedregales Poligono Industrial , within the Municipal District of Casares, in the Province of Málaga.

It is located on Land Suitable for Industrial Buildings (Rest), according to the General Urban Planning Plan of the Casares City Council in its Partial Adaptation to the LOUA of the NN.SS. of the year 1986, with final approval in March 2010. Likewise, the UR-IND Sector has been developed through the Partial Plan of the "Los Pedregales" Industrial Estate, with approval in April 2005.

ORDINANCES OF EACH ZONE: INDUSTRIAL ZONE

Light industrial activities or services of an industrial nature. Nursery housing is allowed and can only be located in facilities whose plot is greater than 1,000 m² and useful surface area will not exceed 100 m².

BASEMENT, maximum 30% of the surface of the warehouse, not being counted as buildable surface.

MAXIMUM NET BUILDABILITY INDEX 1 m² ceiling/m² floor on the surface of the net plot, with the plot surfaces being 358.00 m²

That is, it is allowed to build an area of 358.00 m²

MINIMUM PLOT The minimum buildable plot will be 200 m².

MAXIMUM OCCUPANCY The maximum occupancy percentage is set at 100% of the plot.

MAXIMUM HEIGHT AND NUMBER OF PLANTS The maximum height will be one floor or 8 m.

FENCES Maximum height of 1 m, and can be continued with a fence made of light and diaphanous material up to a height of 2.50 m.

SEPARATION TO BOUNDARIES It is only allowed to the rear alignments (background of the plot) and a minimum of 3 meters to the boundaries of the sector. PARKING Inside the plot, within the building or in patios contained in it, parking will be provided in the proportion of one space for every 100 m² t in plots larger than 500 m² t, and one space for every 150 m² t in those less than 500 m².

AESTHETIC ORDINANCES The roofs of the warehouses may not be made of reflective material, the color must be matte green. The façade facings cannot be metallic, and their colors must be light, preferably beige or cream. Facades that face the road network have commercial interest are excepted from these rules. However, the authorization of warehouse designs for architectural interest, which could contradict previous ordinances, is left to the municipal discretion.

Features:

Views

Panoramic

Setting

Commercial Area

Close To Shops

Close To Town

Suburban

Close To Forest

Parking

Street

Utilities

Electricity

Drinkable Water

Telephone

Category

Resale

Off Plan

With Planning Permission