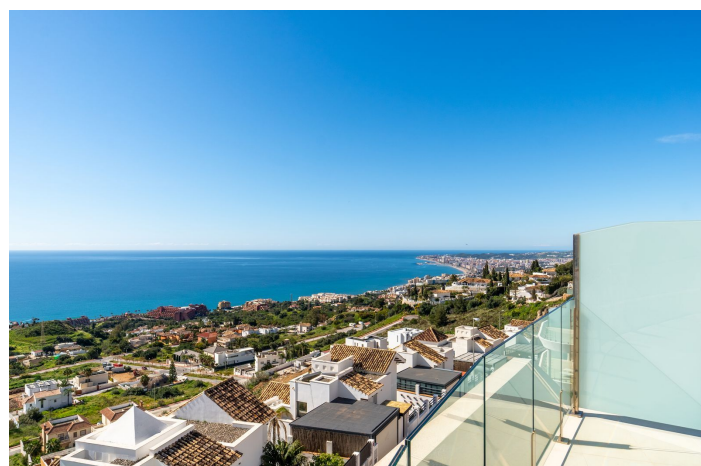
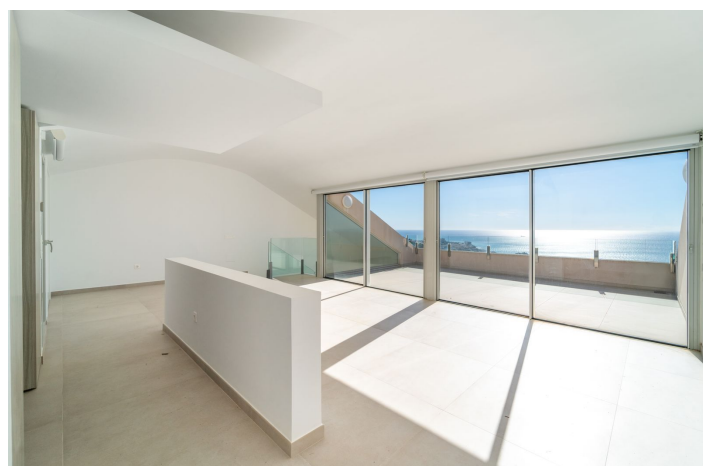
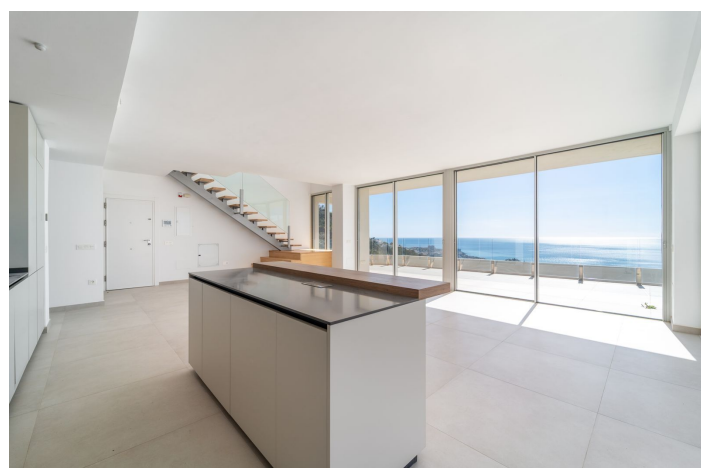




Penthouse Duplex for sale in Benalmadena Pueblo, Benalmádena

1,289,000 €

Reference: R4838542 Bedrooms: 4 Bathrooms: 3 Build Size: 215m² Terrace: 85m²





Costa del Sol, Benalmadena Pueblo

Brand new south facing penthouse duplex, located in the exclusive urbanization of Stupa Hills. The property consists of hall, 3 bedrooms with built-in wardrobes and electric blinds, bathroom and guest toilet, open plan kitchen fully furnished and equipped with electrical appliances from Siemens. Spacious living-dining room that leads out to a terrace of 65m2 with panoramic sea views, the Fuengirola Bay and of the Buddhist Temple. On the top floor is located the main bedroom with walk-in closet, ensuite bathroom and laundry area. The bedroom leads out to a terrace of 21m2 with panoramic sea views. Air conditioning hot and cold with Airzone, video intercom, domotic system, pre-installation alarm system. Includes two parking spaces and one storage room.



Features:

Features

Covered Terrace
Lift
Near Transport
Private Terrace
Storage Room
Ensuite Bathroom
Double Glazing
Fitted Wardrobes
Utility Room
Gym
Domotics
Courtesy Bus
Access for people with reduced mobility
Near Mosque

Views

Sea
Panoramic
Port

Furniture

Not Furnished

Security

Gated Complex
Entry Phone

Category

Resale

Orientation

South

Setting

Urbanisation
Close To Shops

Kitchen

Fully Fitted

Parking

Underground
More Than One

Climate Control

Air Conditioning

Condition

Excellent
New Construction

Garden

Communal

Utilities

Electricity
Drinkable Water