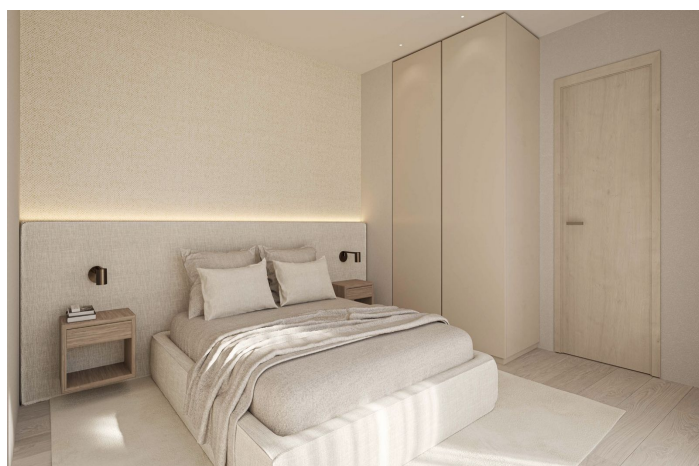
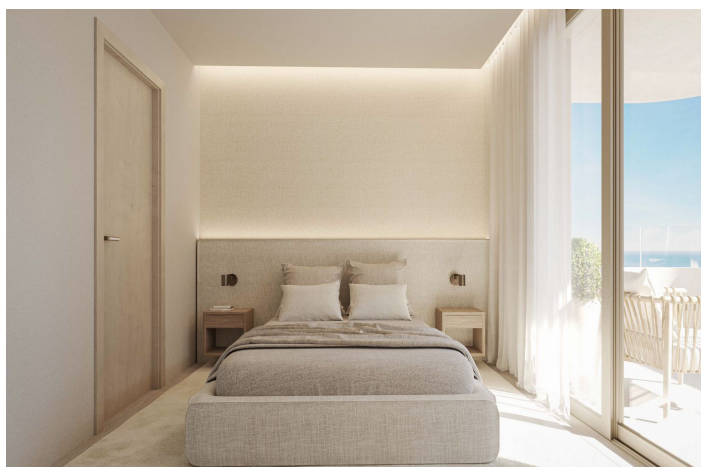




Middle Floor Apartment for sale in Estepona, Estepona

500,000 €

Reference: R4875205 Bedrooms: 1 Bathrooms: 1 Build Size: 41m² Terrace: 5m²





Costa del Sol, Estepona

Presenting an extraordinary new construction on the beachfront of Estepona, this south-facing masterpiece epitomizes luxury and elegance. Bathed in natural light throughout the day, this 1 bedroom 1 bathroom apartment offers sweeping, unobstructed views of the sparkling Mediterranean Sea, framed by Estepona's beautiful coastline. Every detail is crafted with the finest materials, from state-of-the-art finishes to premium flooring, creating an atmosphere of refined sophistication. Residents of this apartment will enjoy direct access to the beach and the comfort of cozy terraces, inviting them to savor the beauty of each sunrise over the horizon. Designed for those who seek both opulence and tranquility, this property is an exquisite blend of architectural excellence and natural beauty. Beyond its beautiful beachfront setting, the building is perfectly situated in the heart of Estepona, a charming town known for its vibrant, family-friendly community and rich Andalusian culture. Estepona offers an ideal blend of modern conveniences and traditional charm, from stylish shopping areas and bustling markets to quaint cafes and inviting restaurants. It's a town that caters to all lifestyles, whether you're enjoying family outings at the many local parks, wandering through its enchanting Old Town with its colorful flower-lined streets, or browsing through its chic boutiques. Estepona's reputation as a family-oriented community is enhanced by its excellent international schools, recreational facilities, and secure neighborhoods, making it an ideal location for those seeking both luxury and a welcoming atmosphere. This beachfront property brings the best of Estepona to your doorstep, blending unparalleled comfort with the natural beauty and cultural richness of this exquisite coastal town. Contact us for more details and information.



Features:

Features

Lift
Near Transport
Private Terrace
Satellite TV
Ensuite Bathroom
Double Glazing
Fitted Wardrobes
WiFi
Fiber Optic
Domotics
Access for people with reduced mobility

Views

Sea
Beach
Street

Furniture

Not Furnished

Parking

Street

Orientation

South
South West

Setting

Commercial Area
Beachside
Close To Port
Urbanisation
Close To Sea
Close To Shops
Close To Town
Close To Schools
Town
Close To Marina
Beachfront
Front Line Beach Complex
Port
Marina

Kitchen

Fully Fitted

Utilities

Electricity
Drinkable Water
Telephone
Gas

Climate Control

Air Conditioning
Pre Installed A/C
Cold A/C
Hot A/C
Central Heating

Condition

Excellent
New Construction

Security

24 Hour Security
Alarm System
Electric Blinds
Entry Phone
Safe

Category

Holiday Homes
Investment
Beachfront
Luxury
Contemporary
Off Plan
With Planning Permission