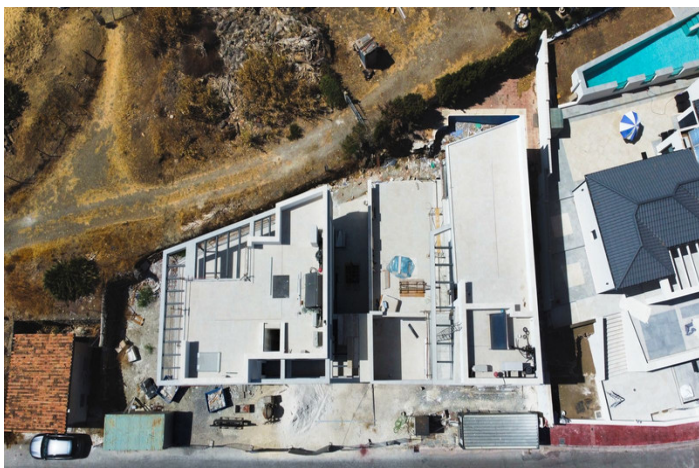


Detached Villa for sale in Nueva Andalucía, Marbella

2,900,000 €

Reference: R4900186 Bedrooms: 4 Bathrooms: 5 Plot Size: 400m² Build Size: 268m² Terrace: 100m²



Costa del Sol, Nueva Andalucía

This unique new built (under construction) contemporary villa in concrete style provides the ultimate luxury open plan living. Located in the beautiful heart of Nueva Andalucía just a minute away from Puerto Banus, walking distance to shops and to the Puerto Banus and short driving distance from Marbella center and San Pedro.

Designed across 4 floors, all accessible through the private elevator, the property offers 4 bedrooms and 5 bathrooms each with an outdoor terrace. Entrance level boasts of a large and spacious parking level for 4+2 cars with double height ceilings and a 2 bedrooms guest apartment + a studio with bathroom on street level.

Welcoming exteriors include a manicured garden which surrounds the entrance and main entrance with water heated pool, cozy lounge areas, an outdoor dining area completed with its own outdoor kitchen and BBQ area for al fresco dining and fire place with chill out area.

On the second floor you will find 2 en-suite bedrooms and a hanging gallery, with ultra high ceiling overlooking the impressive living area. The generous master suite is completed with a walk-in shower, stand alone bath and an expansive walk-in wardrobe.

A large outdoor sun terrace overlooks the pool and garden with access to the roof terrace. An expansive area with 3 separate terraces, giving you even more options for sunbathing and dining, while enjoying the breathtaking Sea and Mountain and landscape views.

Construction has been started and will be finished end of 2024.

Features:**Features**

Covered Terrace
Lift
Near Transport
Private Terrace
Storage Room
Ensuite Bathroom
Marble Flooring
Double Glazing
Fitted Wardrobes
Utility Room
Barbeque
WiFi
Gym
Fiber Optic
Near Church
Jacuzzi
Solarium
Guest Apartment
Basement
Staff Accommodation
Sauna
Games Room
Domotics
Access for people with reduced mobility
Bar
Day Care
Near Mosque

Views

Sea
Mountain
Panoramic
Country
Garden
Pool
Urban
Street
Courtyard
Golf
Forest

Pool

Heated
Private

Garden

Private

Orientation

South
South East
South West

Setting

Close To Golf
Close To Port
Close To Sea
Close To Shops
Close To Town
Close To Schools
Town
Close To Marina
Close To Forest

Furniture

Fully Furnished
Part Furnished

Security

24 Hour Security

Climate Control

Air Conditioning
Pre Installed A/C
Hot A/C
Fireplace
U/F Heating
U/F/H Bathrooms
Central Heating

Condition

Excellent
New Construction

Kitchen

Fully Fitted
Partially Fitted

Parking

Garage

Easy Maintenance

Utilities

Electricity

Drinkable Water

Photovoltaic solar panels

Solar water heating

Alarm System

Electric Blinds

Entry Phone

Safe

Category

Holiday Homes

Investment

Luxury

Contemporary

Private

More Than One

Street