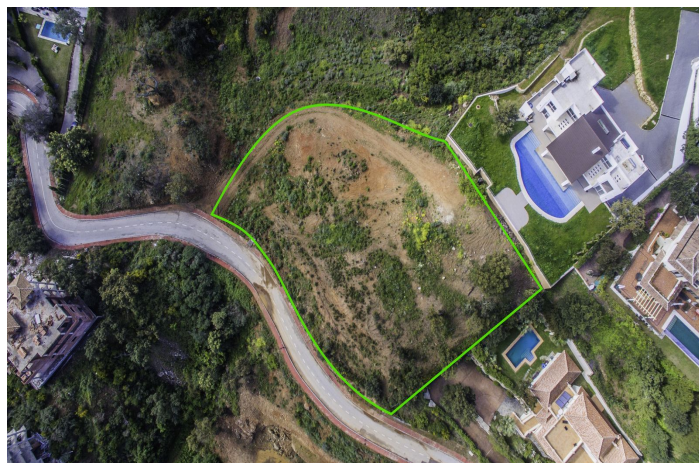




## Detached Villa for sale in La Mairena, Marbella

**2,640,000 €**

Reference: R5026882   Bedrooms: 4   Bathrooms: 4   Plot Size: 3,719m<sup>2</sup>   Build Size: 392m<sup>2</sup>   Terrace: 230m<sup>2</sup>





---

## Costa del Sol, La Mairena

Set within the lush, green hills of La Mairena just 7 minutes from Marbella's finest beaches, this stunning detached villa is the perfect blend of modern design, peaceful surroundings, and panoramic views. Boasting a generous 553m<sup>2</sup> of built space and set on an expansive elevated plot of 3,719m<sup>2</sup>, this home is an ideal sanctuary for those seeking both privacy and sophistication. The villa is a contemporary masterpiece, offering bright and open interiors with clean lines and luxury finishes throughout. Its two-storey layout is flooded with natural light thanks to expansive floor-to-ceiling windows, which not only brighten every corner of the home but also frame breathtaking views of the Mediterranean Sea, the surrounding countryside, and the Sierra Blanca mountains. All four bedrooms are spacious, each with its own en-suite bathroom, ensuring privacy and comfort for both residents and guests. The master suite, in particular, offers spectacular views and direct access to a private terrace—perfect for enjoying tranquil mornings or romantic sunsets. Multiple outdoor terraces allow you to truly embrace the Andalusian lifestyle—ideal for entertaining, alfresco dining, or simply relaxing by the pool with a drink in hand. The villa's elevated position guarantees uninterrupted views and a constant sense of serenity. Included in the sale is a paid building license, offering potential for future expansion or personalisation of the property. Whether you're looking for a permanent residence, holiday retreat, or an investment with strong rental potential, this villa in La Mairena offers it all. A rare opportunity to own a designer home in one of Marbella's most natural and exclusive residential areas.





## Features:

### Features

Covered Terrace  
Private Terrace  
Storage Room  
Fitted Wardrobes

### Views

Sea  
Panoramic  
Garden

### Pool

Private

### Parking

Private  
More Than One

### Orientation

East

### Setting

Close To Shops  
Close To Town  
Close To Schools

### Garden

Private

### CO2 Emission Rating

B

### Climate Control

Air Conditioning

### Condition

New Construction

### Security

Alarm System

### Energy Rating

B