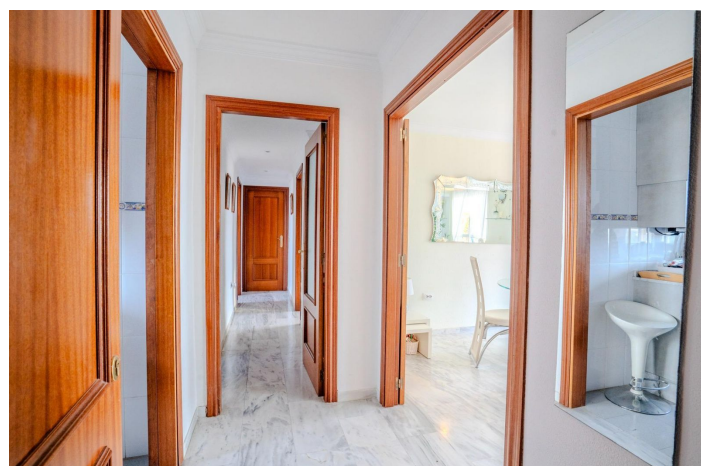
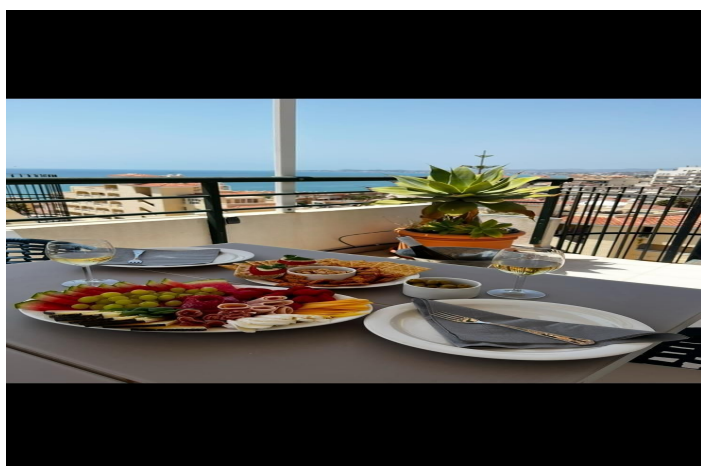




Penthouse Duplex for sale in Torrequebrada, Benalmádena

460,000 €

Reference: R5032792 Bedrooms: 3 Bathrooms: 2 Build Size: 125m² Terrace: 65m²





Costa del Sol, Torrequebrada

Duplex penthouse for sale in Nueva Torrequebrada, Benalmadena Costa. Duplex penthouse for sale in Nueva Torrequebrada, Benalmadena Costa. For sale duplex penthouse with spectacular views in Nueva Torrequebrada, Benalmadena Costa. Discover this exclusive duplex penthouse in one of the best areas of Benalmadena Costa. With a comfortable and functional distribution, the property has a spacious independent living room with access to a terrace, independent kitchen with utility room, and three bright bedrooms. The master bedroom has an en-suite bathroom, while two bedrooms have direct access to the terrace. In addition, one of the bedrooms connects to a versatile space ideal as a storage room or office. From the main terrace, an elegant spiral staircase leads up to the impressive private roof terrace, where you can enjoy a barbecue area, a small private swimming pool and unbeatable sea and mountain views. The living room and master bedroom have split air conditioning, and on both terraces you will find aluminium cupboards for extra storage. In addition to the private pool, the property has a communal pool, communal areas, and private parking. Located in a privileged environment, this property offers tranquillity and comfort, with all services at your fingertips: train, restaurants, schools, supermarkets and much more. Don't miss the opportunity to live in this paradise with unbeatable views! In compliance with the Decree of the Junta de Andalucia 2182005 of the 11th of October 2005, we inform the client that the notary fees, registration fees, ITP (Property Transfer Tax) are not included in the price. The consumer has the right to receive a copy of the corresponding abbreviated information document of the property ('DIA').



Features:

Features

Covered Terrace
Lift
Near Transport
Private Terrace
Marble Flooring
Double Glazing
Fitted Wardrobes
Barbeque
WiFi
Jacuzzi

Views

Sea
Mountain
Panoramic
Pool

Pool

Communal
Private

Garden

Communal

Utilities

Electricity
Drinkable Water
Telephone

Orientation

South East

Setting

Commercial Area
Close To Golf
Urbanisation
Close To Sea
Close To Town
Close To Schools

Furniture

Fully Furnished

Security

Entry Phone

Category

Holiday Homes

Climate Control

Air Conditioning

Condition

Good

Kitchen

Fully Fitted

Parking

Garage
Covered