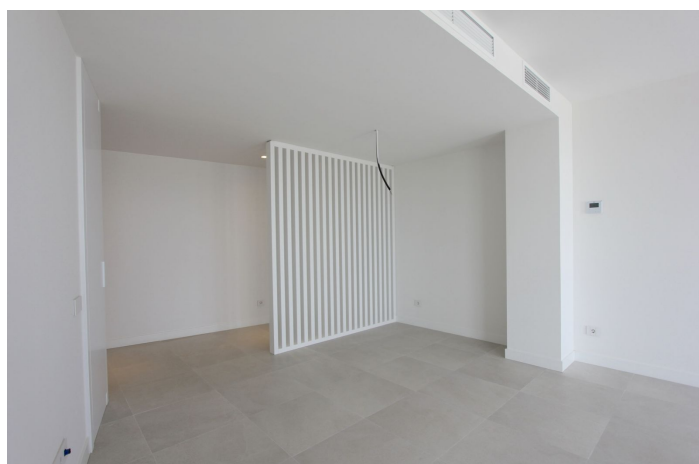
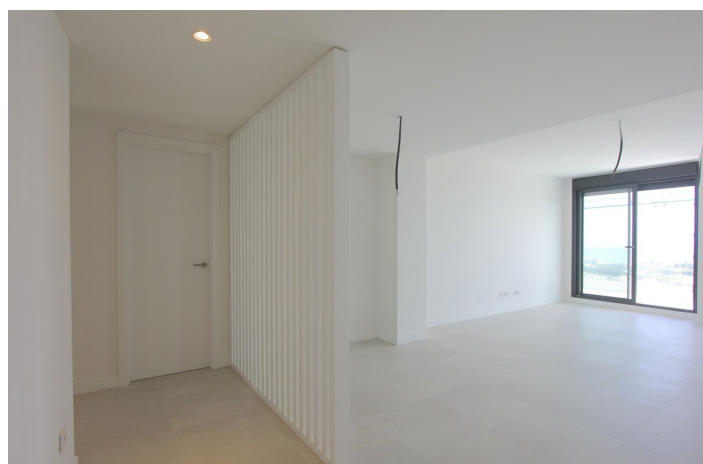




Penthouse for sale in Selwo, Estepona

900,000 €

Reference: R5024629 Bedrooms: 2 Bathrooms: 2 Build Size: 112m² Terrace: 97m²





Costa del Sol, Selwo

Brand-new luxury penthouse with breathtaking panoramic sea views — from Gibraltar to the African Coast Introducing a truly unique and newly completed penthouse in the exclusive Vanian Views residential complex, nestled in the sought-after Selwo area of Estepona. This modern masterpiece offers uninterrupted panoramic views of the Mediterranean, stretching from the Rock of Gibraltar to the North African coastline. Ideally positioned, the penthouse is moments away from Selwo Aventura Park, Atlas American School of Málaga, the Orthodox Church, and Hospiten Estepona. The beach is just 2.5 km away, Estepona town center is a 10-minute drive, and there are eight renowned golf courses within a 15-minute radius. Vanian Views is a private, gated development of only 61 homes, designed to maximize light, space, and the incredible surroundings. Communal amenities include a large central swimming pool, a stylish social club, a fully equipped gym, and a sauna — all set within beautifully landscaped gardens. This penthouse is brand new and ready to move-in. The main level features a welcoming entrance with built-in wardrobes, an expansive open plan living and dining area with sea views from the moment you walk in, and a sleek, modern kitchen with a large central island. The master suite includes an en-suite bathroom and access to the main 32 m² terrace, shared with the living area and the kitchen — perfect for enjoying those unbeatable vistas. In the back the second bedroom and bathroom with views to the communal pool. An exterior staircase leads to your private 65 m² rooftop solarium with 360° views to the sea, Sierra Bermeja, and La Concha mountains. The solarium includes a stylish pergola and pre-installation for an outdoor kitchen, ideal for entertaining under the sun or stars. Additional features include two private underground parking spaces, a large storage room, and direct elevator access from the garage to the penthouse. Air conditioning hot and cold, underfloor heating in the bathroom, fully furnished kitchen with Bosch appliances This exceptional home is where the sky meets the sea — a peaceful retreat with luxury, comfort, and views beyond compare.



Features:

Features

Lift
Near Transport
Private Terrace
Storage Room
Double Glazing
Fitted Wardrobes
Utility Room
Gym
Access for people with reduced mobility

Views

Sea
Mountain
Panoramic
Pool

Pool

Communal

Garden

Communal

Utilities

Electricity
Energy Rating
A

Orientation

South

Setting

Urbanisation
Close To Schools

Furniture

Not Furnished

Security

Gated Complex
24 Hour Security
Entry Phone

Category

Contemporary

Climate Control

Air Conditioning
Cold A/C
Hot A/C
U/F Heating

Condition

Excellent
New Construction

Kitchen

Fully Fitted

Parking

Underground
Garage
Private

CO2 Emission Rating

A