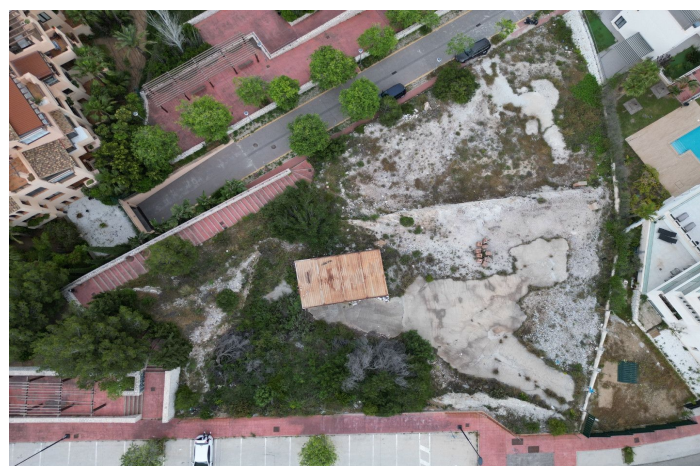
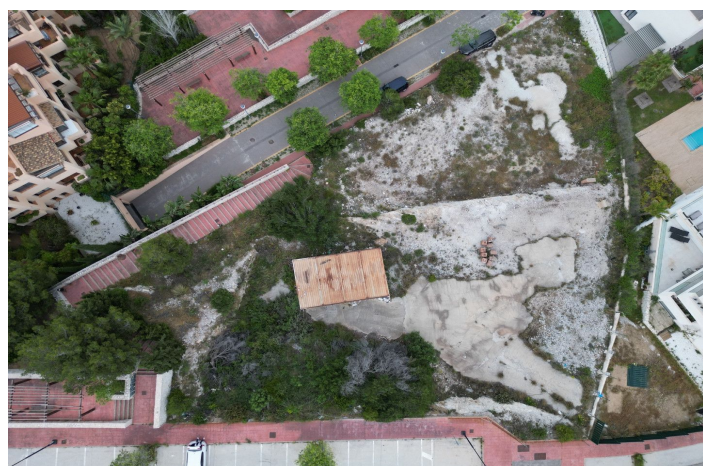
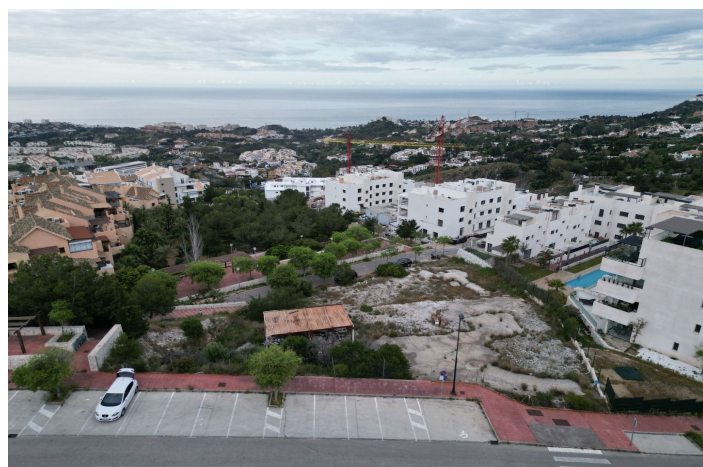




Land for sale in Benalmádena, Benalmádena

895,000 €

Reference: R5034475 Plot Size: 1,997m²





Costa del Sol, Benalmádena

A rare opportunity to secure 1,997m² of southeast-facing land in the heart of Benalmádena. This exceptional plot offers open views of the Mediterranean Sea and is perfectly positioned for commercial development, with permissions allowing up to two levels of construction. It's ideal for those looking to create a boutique complex, professional offices, or a high-end retail space in one of the Costa del Sol's most sought-after areas. This plot combines visibility, access, and lifestyle appeal. It sits moments from the motorway and local amenities including restaurants, golf courses, shops, and top schools. The elevated position ensures sweeping sea views and outstanding exposure — a key advantage for any business. Invest in a standout location with exceptional potential. This is not just a plot of land but a smart commercial opportunity in a vibrant, high-growth area of the Costa del Sol.



Features:

Features

Near Transport

Views

Sea

Mountain

Panoramic

Country