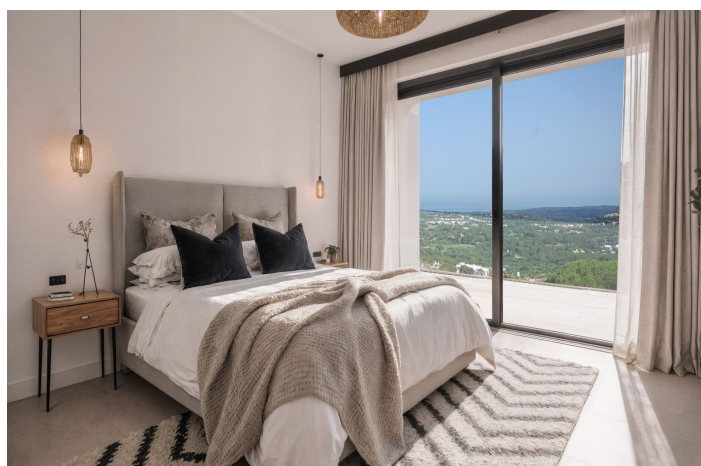




## Detached Villa for sale in Sotogrande, Sotogrande

**4,000,000 €**

Reference: R5078890   Bedrooms: 4   Bathrooms: 5   Plot Size: 2,707m<sup>2</sup>   Build Size: 436m<sup>2</sup>   Terrace: 118m<sup>2</sup>





---

## Costa de la Luz, Sotogrande

Conceived for those seeking more than just a residence, this villa is a unique proposal that combines avant-garde design, functionality, and the refined Costa del Sol lifestyle. Its open layout, pure volumes, and seamless connection with the outdoors are designed to offer a serene, light-filled, and immersive living experience. Every space has been crafted to evoke sensations: well-being, privacy, and freedom. The villa takes shape as a natural extension of its surroundings, respecting its beauty while elevating comfort to a higher level.

**THE ENVIRONMENT** In a privileged setting surrounded by golf courses, marinas, and Mediterranean landscapes, an exclusive lifestyle is born. La Reserva de Sotogrande is located within a distinguished private community that ensures peace, security, and a refined environment. Discover villas that combine architecture, privacy, and nature in perfect harmony.

**A PRIVILEGED SETTING WITH EVERY COMFORT AT YOUR FINGERTIPS.** This distinguished residential community has been carefully designed to offer a refined and complete lifestyle experience, seamlessly integrated with its exceptional surroundings. From an exclusive 18-hole golf course to a high-end spa, and a curated selection of restaurants, wellness areas, and leisure spaces including a stunning lake with its own private beach, every amenity contributes to a way of life without compromise. Just minutes away lies one of Europe's most prestigious equestrian clubs, ideal for those who value sport, nature, and tradition.



## Features:

### Features

Covered Terrace  
Private Terrace  
Storage Room  
Ensuite Bathroom  
Double Glazing  
Fitted Wardrobes  
Utility Room  
WiFi  
Fiber Optic  
Domotics

### Views

Sea  
Panoramic  
Garden  
Pool

### Pool

Private

### Security

Entry Phone  
Safe

### Category

New Development

### Orientation

South

### Setting

Close To Golf  
Close To Sea  
Close To Town  
Close To Marina

### Kitchen

Fully Fitted  
Kitchen-Lounge

### Parking

Private  
More Than One

### Climate Control

Cold A/C  
Hot A/C  
U/F Heating

### Condition

New Construction

### Garden

Private  
Landscaped

### Utilities

Solar water heating