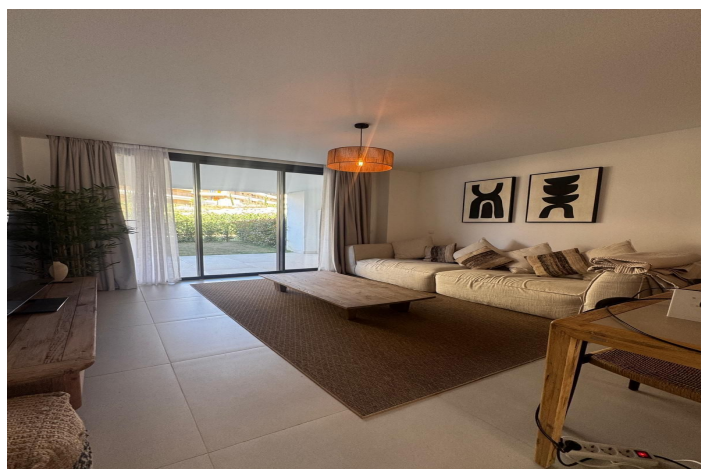




Ground Floor Apartment for sale in Benalmadena Costa, Benalmádena

549,000 €

Reference: R5103553 Bedrooms: 3 Bathrooms: 3 Plot Size: 30m² Build Size: 102m² Terrace: 23m²





Costa del Sol, Benalmadena Costa

📍 **Luxury Garden Apartment – Perfect for Holidays or Investment in Lomas del Higuero** 📍 Located in the prestigious Lomas del Higuero development, nestled between Fuengirola and Benalmádena, this immaculate ground floor apartment with 3 bedrooms and 3 bathrooms is a rare opportunity—ideal both as a second home for personal enjoyment and as a high-return vacation rental investment. Designed to offer a premium lifestyle experience, this property blends comfort, functionality, and elegance in one of the most sought-after locations on the Costa del Sol. 📍 **Highlights:** - 3 spacious bedrooms, 2 of them en-suite – offering privacy and comfort for everyone - 3 full bathrooms with stylish modern finishes - Private enclosed garden perfect for relaxing or outdoor entertaining - Master bedroom with direct access to the garden and terrace - Open-plan kitchen, fully equipped with high-end appliances - Integrated air conditioning for year-round comfort - 2 underground parking spaces included 📍 **Resort-Style Amenities:** - Wellness and spa area to unwind without leaving home - Fully equipped gym - Spectacular swimming pool with sunbathing areas - Peaceful and secure environment surrounded by nature 📍 **Ideal for:** - Families looking for a turnkey holiday home - Investors seeking to tap into the strong demand for short-term rentals in the area - Lovers of the Mediterranean lifestyle who value comfort, design, and location - With its strategic location, just minutes from the beach, golf courses, shops, restaurants, and Málaga Airport, this property offers a double return: quality of life and consistent rental income. 📍 **Contact us today to schedule a viewing** 📍 This property won't stay on the market for long – the best opportunities go fast in Lomas del Higuero!



Features:

Features

Covered Terrace
Lift
Double Glazing
Fitted Wardrobes
WiFi
Fiber Optic

Views

Mountain
Garden
Pool

Pool

Communal

Garden

Communal
Private

Utilities

Electricity
Drinkable Water
Telephone

Orientation

South
West
South West

Setting

Beachside
Close To Golf
Urbanisation
Close To Sea
Close To Shops
Close To Town
Close To Schools

Furniture

Fully Furnished

Security

Gated Complex
Alarm System
Entry Phone

Category

Holiday Homes
Investment
Distressed
Contemporary

Climate Control

Air Conditioning
Cold A/C
Hot A/C

Condition

Excellent

Kitchen

Fully Fitted

Parking

Underground
Private
More Than One