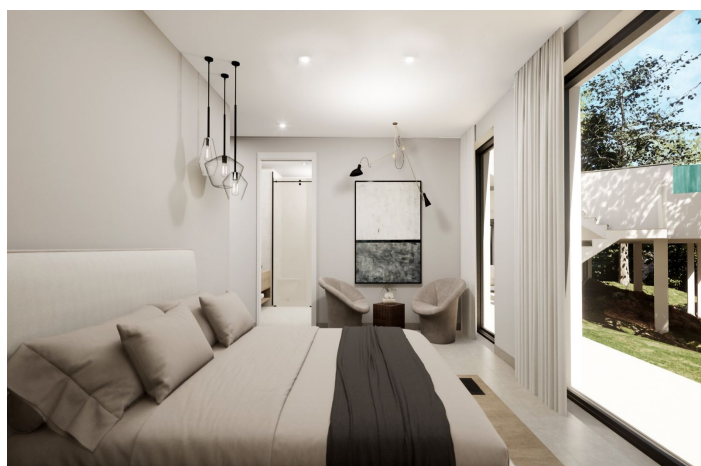




## Detached Villa for sale in Sotogrande, Sotogrande

**3,350,000 €**

Reference: R5066647 Bedrooms: 5 Plot Size: 1,786m<sup>2</sup> Build Size: 879m<sup>2</sup> Terrace: 329m<sup>2</sup>





---

## Costa de la Luz, Sotogrande

Tucked away on a quiet cul-de-sac in Sotogrande's tranquil F Zone, this striking new villa is currently under construction and set for completion in May 2025. Designed with modern living in mind, the home embraces its south-facing position, flooding the interior with natural light and opening up to lush garden views and the calming backdrop of native woodlands. Occupying a generous 1,786 m<sup>2</sup> plot, the villa is accessed via a long private driveway that ensures complete privacy. Inside, the 550 m<sup>2</sup> layout is spacious and thoughtfully planned, offering five large bedrooms, multiple living and entertaining areas, and seamless transitions to outdoor spaces. There are 265 m<sup>2</sup> of open terraces, 64 m<sup>2</sup> of covered terraces, and a stunning rooftop terrace—perfect for sunset views and alfresco evenings. The home will be equipped with high-spec features, including underfloor heating, full air conditioning, and an advanced domotic system for effortless control of lighting, climate, and security. Outside, the 14.5 m x 5 m saltwater infinity pool—solar-heated for energy efficiency—sits in harmony with the landscaped gardens, creating an ideal space for relaxing and entertaining. Combining sleek architecture, sustainable tech, and a peaceful setting, this property is a rare find for buyers looking for a refined lifestyle in one of Sotogrande's most desirable neighborhoods.



## Features:

### Features

Private Terrace  
Storage Room  
Ensuite Bathroom  
Double Glazing  
Fitted Wardrobes  
Utility Room  
WiFi  
Fiber Optic  
Basement  
Domotics

### Views

Garden  
Pool

### Pool

Private

### Security

Alarm System  
Entry Phone

### Category

Luxury

### Orientation

South

### Setting

Close To Golf  
Close To Town  
Close To Schools

### Kitchen

Partially Fitted  
Kitchen-Lounge

### Parking

Private

### Climate Control

Air Conditioning  
U/F Heating

### Condition

Excellent  
New Construction

### Garden

Private

### Utilities

Electricity  
Drinkable Water  
Solar water heating  
Telephone