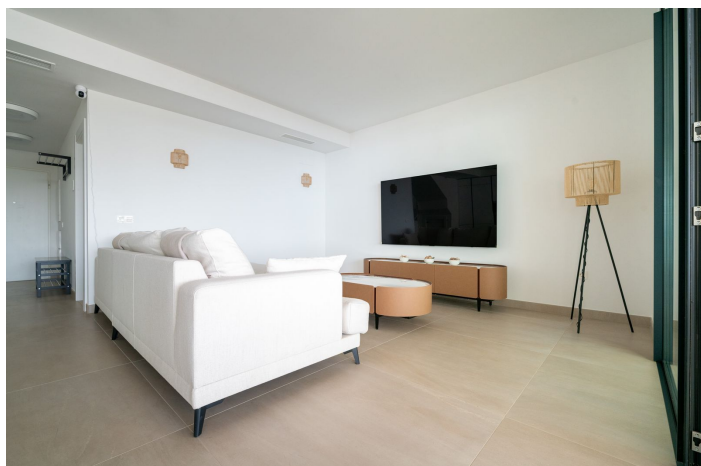




Penthouse Duplex for sale in Reserva del Higuerón, Benalmádena

1,250,000 €

Reference: R5048536 Bedrooms: 3 Bathrooms: 3 Build Size: 133m² Terrace: 53m²





Costa del Sol, Reserva del Higuerón

Exclusive Duplex with Panoramic Sea Views – Seaviews Reserve, Fuengirola We present a unique opportunity to acquire a spectacular duplex in the prestigious Seaviews Reserve development, recently completed and located just 100 meters from Carvajal Beach in Fuengirola. This luxury property, located on the third floor (unit 3°C), offers a total built area of over 190 m², including two spacious terraces (27.30 m² and 23.50 m²), both with stunning views of the Mediterranean Sea. One of the terraces features a private jacuzzi, perfect for relaxing while enjoying the sunset. The duplex comprises three double bedrooms, including a master suite with a walk-in wardrobe and en-suite bathroom, three full bathrooms, a spacious open-concept living-dining room of over 35 m² with a brand-new fully equipped kitchen, an independent laundry room, a storage space, and an internal staircase. Key Features: * 3 bedrooms and 3 bathrooms * Open-plan living-dining area with 35.70 m² * 2 private terraces with south orientation and sea views * Outdoor jacuzzi * Separate laundry room (3.10 m²) * Private storage room (3.50 m²) * Two parking spaces included (12.50 m² each) * Approximate usable living area: 133.40 m² The complex offers high-end communal areas, including an infinity pool, fully equipped gym, sauna, Turkish bath, landscaped gardens, chill-out area, and solarium – all with brand-new furniture and modern installations delivered in February 2024. Prime Location: In addition to its beachfront location, the property is close to all essential services such as supermarkets, restaurants, schools, hotels, and public transport. The Carvajal train station is just 30 meters away, offering easy access to the airport, Málaga city, and other towns along the Costa del Sol.



Features:

Features

Covered Terrace

Lift

Near Transport

Private Terrace

Double Glazing

Fitted Wardrobes

WiFi

Gym

Fiber Optic

Jacuzzi

Solarium

Sauna

Access for people with reduced mobility

Views

Sea

Mountain

Panoramic

Pool

Communal

Garden

Communal

Orientation

East

South East

Setting

Close To Golf

Close To Sea

Close To Town

Close To Schools

Close To Marina

Furniture

Fully Furnished

Security

24 Hour Security

Climate Control

Air Conditioning

Central Heating

Condition

Excellent

Kitchen

Fully Fitted

Parking

Underground