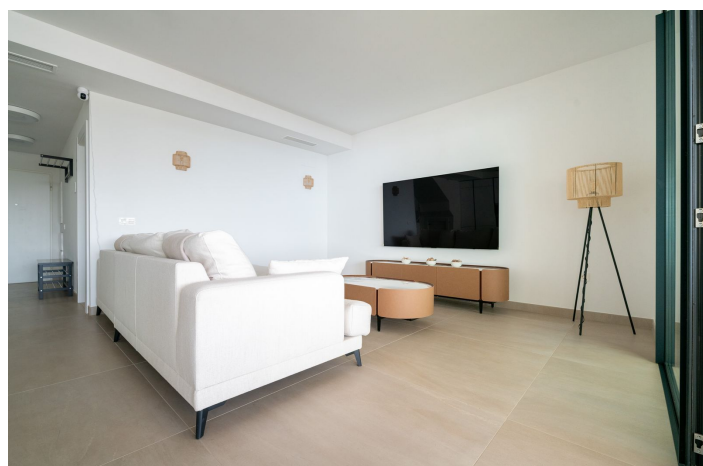




Ático duplex en venta en Reserva del Higuerón, Benalmádena

1.250.000 €

Referencia: R5048536 Dormitorios: 3 Baños: 3 Construido: 133m² Terraza: 53m²





Costa del Sol, Reserva del Higuerón

Exclusive Duplex with Panoramic Sea Views – Seaviews Reserve, Fuengirola We present a unique opportunity to acquire a spectacular duplex in the prestigious Seaviews Reserve development, recently completed and located just 100 meters from Carvajal Beach in Fuengirola. This luxury property, located on the third floor (unit 3°C), offers a total built area of over 190 m², including two spacious terraces (27.30 m² and 23.50 m²), both with stunning views of the Mediterranean Sea. One of the terraces features a private jacuzzi, perfect for relaxing while enjoying the sunset. The duplex comprises three double bedrooms, including a master suite with a walk-in wardrobe and en-suite bathroom, three full bathrooms, a spacious open-concept living-dining room of over 35 m² with a brand-new fully equipped kitchen, an independent laundry room, a storage space, and an internal staircase. Key Features: * 3 bedrooms and 3 bathrooms * Open-plan living-dining area with 35.70 m² * 2 private terraces with south orientation and sea views * Outdoor jacuzzi * Separate laundry room (3.10 m²) * Private storage room (3.50 m²) * Two parking spaces included (12.50 m² each) * Approximate usable living area: 133.40 m² The complex offers high-end communal areas, including an infinity pool, fully equipped gym, sauna, Turkish bath, landscaped gardens, chill-out area, and solarium – all with brand-new furniture and modern installations delivered in February 2024. Prime Location: In addition to its beachfront location, the property is close to all essential services such as supermarkets, restaurants, schools, hotels, and public transport. The Carvajal train station is just 30 meters away, offering easy access to the airport, Málaga city, and other towns along the Costa del Sol.



Características:

Características

Terraza cubierta
Ascensor
Transporte cercano
Terraza privada
Doble acristalamiento
Armarios empotrados
Wifi
Gimnasio
Fibra óptica
Jacuzzi
Solárium
Sauna
Acceso para personas con movilidad reducida

Vistas

Mar
Montaña
Panorámicas

Piscina

Comunal

Jardín

Comunal

Orientación

Este
Sureste

Configuración

Cerca de golf
Cerca del mar
Cerca de ciudad
Cerca de escuelas
Cerca de Marina

Muebles

Totalmente amueblado

Seguridad

Seguridad 24 horas

Control climatico

Aire acondicionado
Calefacción central

Condición

Excelente

Cocina

Totalmente equipada

Estacionamiento

Subterráneo