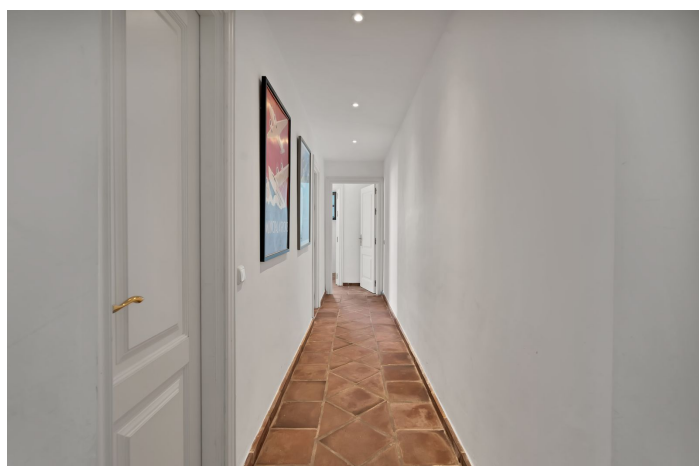
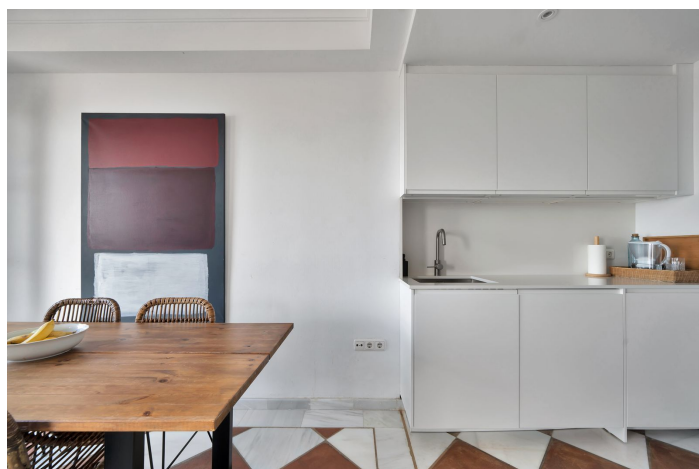




## Penthouse for sale in La Heredia, Benahavís

**549,000 €**

Reference: R5131708   Bedrooms: 2   Bathrooms: 3   Build Size: 130m<sup>2</sup>   Terrace: 17m<sup>2</sup>





---

## Costa del Sol, La Heredia

Discover paradise in this stunning penthouse for sale in the prestigious La Heredia residential complex! With 360-degree panoramic sea views, this home is a perfect retreat for those seeking tranquillity and beauty. The complex, designed like a charming village, is just 10 minutes from the centre of San Pedro de Alcántara and the beach, and 15 minutes from Marbella. Surrounded by outstanding golf clubs such as Los Arqueros and La Zagaleta, this location is ideal for sports and nature lovers. This penthouse has a spacious living room with a fireplace, perfect for enjoying cosy moments. The kitchen is fully equipped and ready for you to prepare your favourite dishes. With two bedrooms, each with its own en-suite bathroom, and an additional toilet, comfort is guaranteed. The two terraces, one measuring 19 m<sup>2</sup> and the other 30 m<sup>2</sup>, offer ideal spaces to relax and enjoy the Mediterranean climate. The development is quiet and features well-maintained vegetation, two swimming pools (one heated) and 24-hour security. In addition, the penthouse has been completely renovated in 2021, offering a modern and functional design. With central air conditioning and underfloor heating, living here is synonymous with comfort. It also includes a private enclosed garage and a storage room. Don't miss the opportunity to live in this spectacular penthouse that combines luxury, comfort and an unbeatable location. Contact us for more information and come and see it! Translated with DeepL.com (free version)



## Features:

### Features

Covered Terrace  
Lift  
Private Terrace  
Storage Room  
Ensuite Bathroom  
Fitted Wardrobes  
WiFi

### Views

Sea  
Mountain  
Panoramic  
Golf

### Pool

Communal

### Garden

Communal

### Utilities

Electricity  
Drinkable Water  
Photovoltaic solar panels

### Orientation

South

### Setting

Urbanisation  
Close To Town  
Close To Schools

### Furniture

Fully Furnished

### Security

Gated Complex  
24 Hour Security

### Category

Resale  
Luxury

### Climate Control

Air Conditioning  
U/F Heating  
U/F/H Bathrooms  
Central Heating

### Condition

Excellent  
Recently Renovated

### Kitchen

Fully Fitted

### Parking

Underground  
Garage