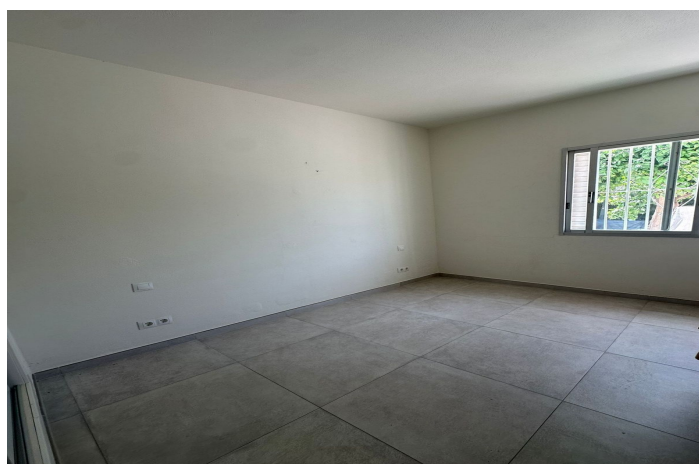




## Ground Floor Apartment for sale in Nueva Andalucía, Marbella

**590,000 €**

Reference: R5141662    Bedrooms: 2    Bathrooms: 2    Build Size: 109m<sup>2</sup>    Terrace: 30m<sup>2</sup>





---

## Costa del Sol, Nueva Andalucía

Stunning Ground Floor Apartment in Nueva Andalucía's Prestigious Aloha Golf Valley

Discover your dream home in the heart of Marbella's exclusive Nueva Andalucía Golf Valley! This beautiful 109 m<sup>2</sup> ground floor apartment in the sought-after Aloha area offers a perfect blend of luxury, comfort, and convenience. With breathtaking views of La Concha beach and lush gardens, this property is a rare gem for those seeking an elevated lifestyle.

### Property Highlights:

**Spacious & Modern Layout:** 2 bedrooms, 2 bathrooms, a fully equipped kitchen, and a dedicated laundry room—all on one floor for seamless living.

**Private Garden:** Enjoy your own outdoor oasis with stunning views of La Concha mountain and the sea.

**Accessibility:** No stairs, ensuring easy access for all.

**Private Parking:** Exclusive parking within the secure urbanisation.

**Premium Community Amenities:** Relax or stay active with access to a swimming pool, tennis courts, paddle tennis court, and a state-of-the-art gym.

### Why Choose Aloha?

Nestled in the prestigious Aloha Golf Valley, this location combines tranquillity with vibrant sophistication. Just minutes from Puerto Banús, you'll enjoy:

World-class golf at Aloha Golf Club, Las Brisas, and Los Naranjos.

A lively social scene with high-end restaurants, chic cafés, boutiques, and exclusive clubs.

Proximity to international schools and top-tier sports facilities, perfect for families.

Unrivalled views of the sea and La Concha mountain, blending luxury with natural beauty

Whether you're seeking a serene retreat, a family-friendly home, or a smart investment, this apartment in Aloha offers it all. Don't miss the chance to own a slice of Marbella's finest lifestyle!

Contact us today to schedule a viewing and make this stunning apartment yours!



## Features:

### Features

Near Transport  
Private Terrace  
Ensuite Bathroom  
Marble Flooring  
Double Glazing  
Fitted Wardrobes  
Utility Room  
Gym  
Fiber Optic  
Tennis Court  
Paddle Tennis  
Access for people with reduced mobility

### Views

Mountain  
Garden

### Pool

Communal

### Garden

Communal  
Private  
Landscaped

### Category

Holiday Homes  
Investment  
Golf

### Orientation

East

### Setting

Close To Golf  
Urbanisation  
Close To Sea  
Close To Shops  
Close To Schools  
Town

### Furniture

Not Furnished

### Security

Gated Complex  
24 Hour Security  
Alarm System  
Entry Phone

### Climate Control

Fireplace

### Condition

Good

### Kitchen

Fully Fitted

### Parking

Private  
Covered