



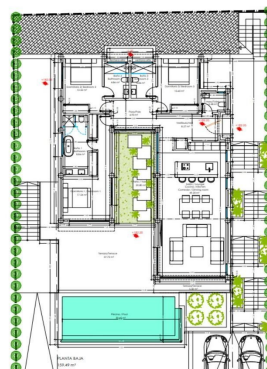
## Detached Villa for sale in La Capellania, Benalmádena

**2,295,000 €**

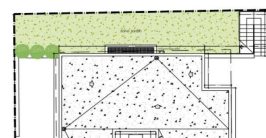
Reference: R5132125 Bedrooms: 3 Bathrooms: 3 Plot Size: 601m<sup>2</sup> Build Size: 265m<sup>2</sup> Terrace: 150m<sup>2</sup>



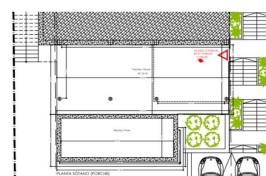
LAYOUT  
3 En-suite Bedrooms



Ground Floor



Upper Level



Porch Floor



---

## Costa del Sol, La Capellania

Located next to La Capellanía, just five minutes from the charming Benalmádena Pueblo and directly beneath the iconic Buddhist Stupa in Retamar, this exceptional single-level villa has been designed by one of Spain's most award-winning architects. Every line and detail has been carefully considered to blend contemporary design, supreme comfort, and a view that can, without exaggeration, be described as one of the very best in the entire area. From the living spaces, sun-drenched terraces, and the impressive 148 m<sup>2</sup> rooftop terrace, the panorama unfolds – the Mediterranean in all its splendour, the coastline of Fuengirola, and the gentle backdrop of the mountains.

Sustainability lies at the heart of this home. Solar panels, a water tank, and energy-efficient systems reduce consumption, while the materials used are of the highest possible quality. The open, light-filled floor plan is enhanced by floor-to-ceiling windows that blur the boundaries between indoors and outdoors. The fully equipped kitchen, fitted with Miele appliances, flows seamlessly into the living areas, while outside, an inviting outdoor kitchen awaits for long, memorable evenings under the stars.

The property offers multiple sunny terraces, an infinity pool, fruit trees, private parking, a security system, and a gated perimeter for both privacy and peace of mind. The possibility of extending into the lower level provides the flexibility to create additional space without compromising the elegance of the villa's single-storey design.





## Features:

### Features

Covered Terrace  
Private Terrace  
Solarium

### Orientation

North  
East  
South  
West  
South East  
South West  
North East  
North West

### Views

Sea  
Panoramic

### Setting

Commercial Area  
Close To Shops

### Parking

Underground

### Condition

Excellent

### Pool

Private

### Category

Luxury