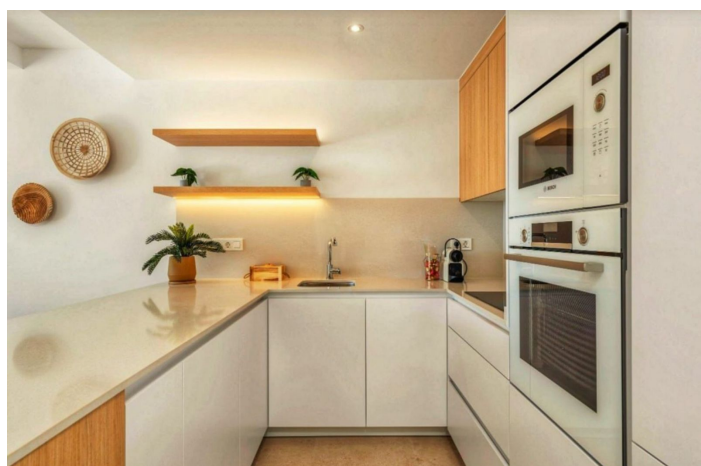
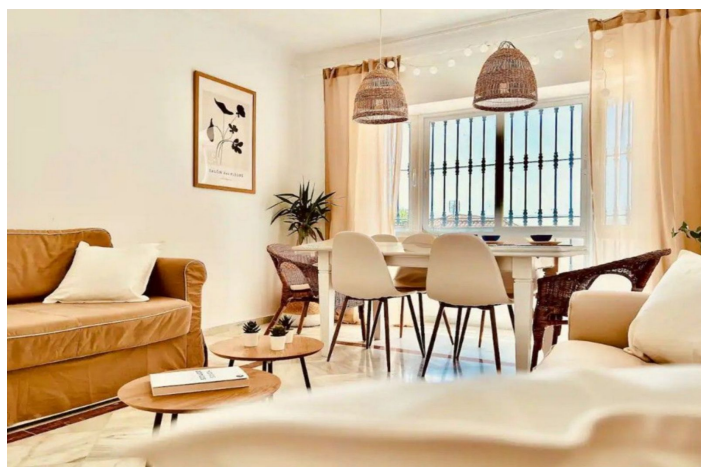




Detached Villa for sale in Estepona, Estepona

952,329 €

Reference: R5156242 Bedrooms: 3 Bathrooms: 3 Plot Size: 835m² Build Size: 110m² Terrace: 25m²





Costa del Sol, Estepona

Detached villa with sea views in Estepona – Don Pedro Development Living on the Costa del Sol transcends mere property ownership: it means enjoying a unique lifestyle where sun, sea, and tranquility become part of everyday life. This detached villa, located in the prestigious Don Pedro development in Arroyo de Enmedio (Estepona), represents an exceptional opportunity for those seeking comfort, privacy, and a prime beachfront location. The single-story villa boasts 110 m² of living space on a generous 835 m² plot. Inside, the layout has been designed to maximize space and natural light: an elegant living room with an open-plan kitchen and direct access to the exterior, along with three bedrooms and three bathrooms, including a master suite with a walk-in closet and en-suite bathroom. Outside, every detail invites you to enjoy the Mediterranean climate: a spacious garden with a private pool, a terrace with a barbecue area, and a charming patio. The property also features covered parking for two vehicles with direct access from the development. Its location is another major asset: a privileged beachfront setting, close to prestigious golf courses, in a quiet area with excellent transport links. Furthermore, it is near shops, amenities, and the Estepona hospital, ensuring convenience and peace of mind for daily life. As an added bonus, the villa offers the possibility of expansion by up to 65 m², making it a unique investment and customization opportunity. This ready-to-move-in residence is ideal as a permanent home or for extended winter stays, where every day becomes a high-quality Mediterranean lifestyle experience.



Features:

Features

Near Transport
Private Terrace
Ensuite Bathroom
Marble Flooring
Double Glazing
Fitted Wardrobes
Barbeque
Solarium

Views

Sea
Pool

Kitchen

Fully Fitted

Utilities

Electricity
Drinkable Water

Orientation

South

Condition

Excellent

Garden

Private

Climate Control

Air Conditioning

Pool

Private

Parking

Garage