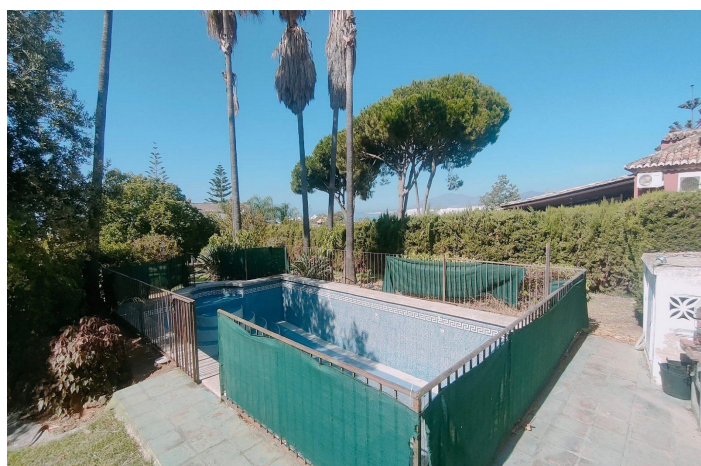
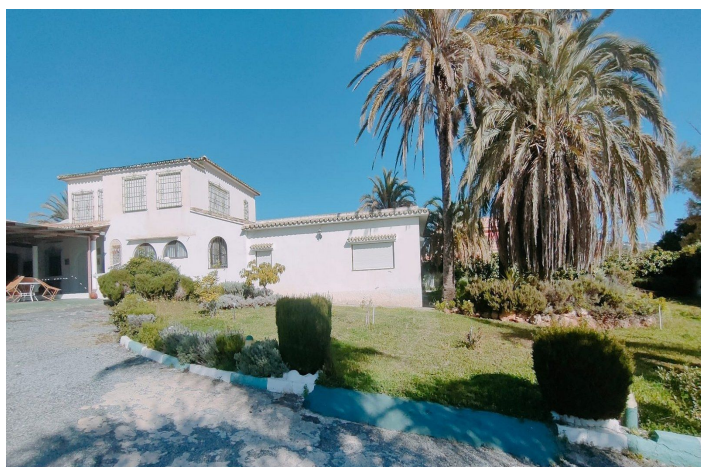




Detached Villa for sale in Marbella, Marbella

1,490,000 €

Reference: R5154985 Bedrooms: 4 Bathrooms: 3 Plot Size: 3,000m² Build Size: 422m² Terrace: 100m²





Costa del Sol, Marbella

Finca with Sea & Port Views – Marbella, Positioned in one of Marbella’s most desirable eastern enclaves, this charming 4-bedroom, 3-bathroom finca captures sweeping views across the Mediterranean and down to the vibrant marina. Just a short stroll from the beach, the property enjoys an exceptional location with effortless access to Marbella’s boutiques, restaurants, and coastal promenade. Set on an expansive 3,000 m² plot, the finca offers remarkable potential for a full refurbishment—ideal for those seeking to design a bespoke home or a standout investment project. Its traditional Andalusian architecture, combined with its elevated position and breathtaking vistas, provides the perfect canvas to create a luxurious contemporary retreat while preserving authentic character. A rare opportunity to secure a property with this scale, privacy, and view quality in such close proximity to Marbella centre. Key Features Full renovation project with exceptional potential Expansive 3,000 m² plot with sea and port views Prime location just minutes from Marbella centre Only 400 m from the beach – an easy 10-minute walk Quiet residential setting with unbeatable access to amenities



Features:

Features

Covered Terrace
Near Transport
Private Terrace
Storage Room
Ensuite Bathroom
Fitted Wardrobes
Utility Room
Solarium
Staff Accommodation
Access for people with reduced mobility

Setting

Close To Golf
Close To Port
Urbanisation
Close To Sea
Close To Shops
Close To Town
Close To Schools
Close To Marina

Kitchen

Partially Fitted

Parking

Garage
Private
More Than One

Orientation

South West

Condition

Renovation Required

Garden

Private
Landscaped

Utilities

Gas

Views

Sea
Mountain
Panoramic
Garden
Pool
Port
Beach

Pool

Private

Security

Electric Blinds

Category

Investment
Resale
Bargain