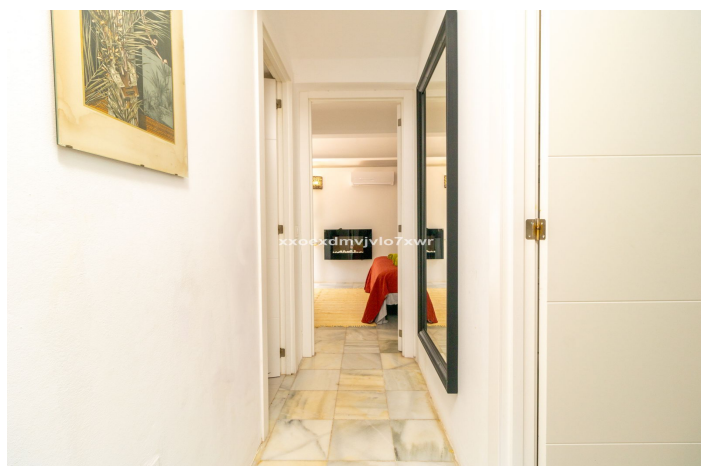




Semi-Detached House for sale in Málaga, Málaga

695,000 €

Reference: R5168668 Bedrooms: 3 Bathrooms: 3 Plot Size: 275m² Build Size: 174m²





Costa del Sol, Málaga

Located in the prestigious Bahía Dorada urbanisation, this elegant two-storey villa combines a privileged location with breathtaking panoramic views of the Mediterranean. Only 50 metres from the beach, it is ideal both as a permanent residence or as a holiday home.

The property offers a bright living room, fully equipped kitchen, three bedrooms and three bathrooms, all distributed in a functional and comfortable layout. Outside, it boasts private areas including a garden, terraces and balconies—perfect for enjoying the sunny Costa del Sol lifestyle.

Residents also benefit from excellent community facilities such as three swimming pools, a tennis court and landscaped areas with covered terraces. The complex provides convenient covered communal parking.

A charming villa by the sea that offers exclusivity, comfort and authentic Mediterranean style.

Located in the prestigious Bahía Dorada urbanisation, this elegant two-storey villa combines a privileged location with breathtaking panoramic views of the Mediterranean. Only 50 metres from the beach, it is ideal both as a permanent residence or as a holiday home.

The property offers a bright living room, fully equipped kitchen, three bedrooms and three bathrooms, all distributed in a functional and comfortable layout. Outside, it boasts private areas including a garden, terraces and balconies—perfect for enjoying the sunny Costa del Sol lifestyle.

Residents also benefit from excellent community facilities such as three swimming pools, a tennis court and landscaped areas with covered terraces. The complex provides convenient covered communal parking.

A charming villa by the sea that offers exclusivity, comfort and authentic Mediterranean style.



Features:

Features

Private Terrace
Storage Room
Ensuite Bathroom
Utility Room
Barbeque
WiFi
Solarium
Tennis Court
Paddle Tennis

Views

Sea
Mountain
Panoramic
Garden
Beach

Pool

Communal

Parking

Communal

Orientation

South
South West

Setting

Beachside
Urbanisation
Close To Sea
Close To Marina
Beachfront
Front Line Beach Complex
Marina

Kitchen

Fully Fitted

Category

Investment
Beachfront

Climate Control

Air Conditioning

Condition

Good

Garden

Communal
Private