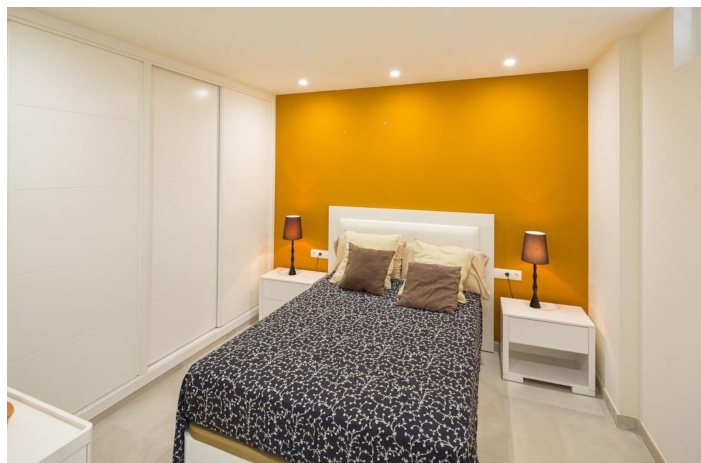




## Penthouse for sale in Nueva Andalucía, Marbella

**470,000 €**

Reference: R5153200 Bedrooms: 3 Bathrooms: 2 Build Size: 89m<sup>2</sup>





---

## Costa del Sol, Nueva Andalucía

This contemporary fully refurbished penthouse is located in the sought-after area of La Dama de Noche, Nueva Andalucía, walking distance to Puerto Banus and the beaches. Offering 3 bedrooms and 2 bathrooms, the property is ideally situated close to a range of amenities, including shops, schools, transport links, the beach, golf courses, and the town centre. The penthouse is set within a gated community, featuring a doorman and surveillance cameras, ensuring a secure and peaceful environment.

The property boasts a generous built area of 89m<sup>2</sup>, recently renovated to a high standard and beautifully presented. The interior layout includes a spacious living room and dining room, complemented by an open plan, fully fitted and equipped kitchen. The guest rooms provides additional flexibility, while fitted wardrobes offer ample storage throughout. Double glazing, electric blinds, and air conditioning contribute to comfort and energy efficiency, and security features such as security entrance, and security shutters providing peace of mind.

The penthouse also benefits from a private garage space in the underground and secure car park.

This complex offers large landscaped gardens with sports facilities, paddle tennis courts, children's playground, lovely walk ways and paths with seating areas, and 2 lagoon-style swimming pools. 24hrs security service. next to La Dama de Noche golf course.

With its proximity to children's playgrounds, the famous Puerto Banus, and all essential amenities, this penthouse is exceptionally well positioned for both families and professionals. The combination of modern features, security, and convenience makes it a desirable choice for those seeking a stylish home in Marbella's vibrant Nueva Andalucia area.



## Features:

### Features

Lift  
Near Transport  
Marble Flooring  
Double Glazing  
Fitted Wardrobes  
Paddle Tennis

### Views

Mountain  
Garden

### Pool

Communal

### Garden

Communal

### CO2 Emission Rating

F

### Orientation

South West

### Setting

Close To Golf  
Close To Port  
Close To Sea  
Close To Shops  
Close To Town  
Close To Schools

### Furniture

Optional

### Security

Gated Complex  
Alarm System  
Electric Blinds

### Energy Rating

F

### Climate Control

Air Conditioning

### Condition

Good  
Recently Renovated

### Kitchen

Partially Fitted  
Kitchen-Lounge

### Parking

Private