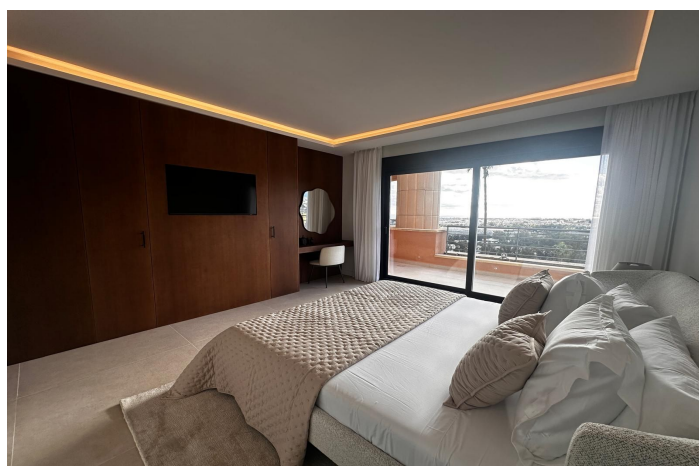
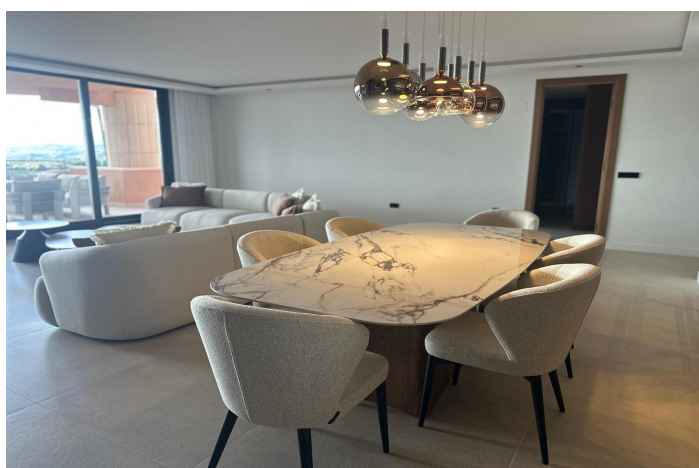




Middle Floor Apartment for sale in Nueva Andalucía, Marbella

1,650,000 €

Reference: R5234458 Bedrooms: 3 Bathrooms: 3 Build Size: 400m² Terrace: 40m²





Costa del Sol, Nueva Andalucía

Luxury Fully Renovated Apartment with Panoramic Sea Views in the Heart of Nueva Andalucía This exceptional apartment has been meticulously renovated to the highest standards and is perfectly positioned in one of Nueva Andalucía's most desirable areas. Upon entering, you are welcomed by an elegant hallway, a guest toilet, and a corridor that opens into a bright and spacious living and dining area. The sleek contemporary kitchen, partially integrated and framed by sophisticated glass doors, creates a stylish and harmonious flow throughout the space. One of the standout features of this property is the impressive 40m² terrace, offering breathtaking sea views—on clear days you can even admire the African coastline. To the right of the living area, the luxurious master suite boasts a generously sized en-suite bathroom, a walk-in wardrobe, and access to a private terrace with sweeping panoramic sea views—an irresistible spot for morning coffee or sunset relaxation. To the left, you'll find two beautifully appointed double bedrooms, both featuring modern en-suite bathrooms, ensuring comfort and privacy for family and guests.



Features:

Features

Covered Terrace
Lift
Near Transport
Ensuite Bathroom
Marble Flooring
Double Glazing
Fitted Wardrobes
WiFi
Restaurant On Site

Views

Sea
Panoramic
Golf

Pool

Communal
Children`s Pool

Garden

Private

Utilities

Electricity
Drinkable Water
Telephone

Orientation

South West

Setting

Commercial Area
Close To Golf
Urbanisation
Close To Sea
Close To Town
Close To Schools
Close To Marina
Frontline Golf

Furniture

Fully Furnished

Security

Gated Complex
24 Hour Security
Entry Phone

Category

Holiday Homes
Resale
Luxury
Contemporary

Climate Control

Air Conditioning

Condition

Recently Renovated

Kitchen

Fully Fitted

Parking

Underground