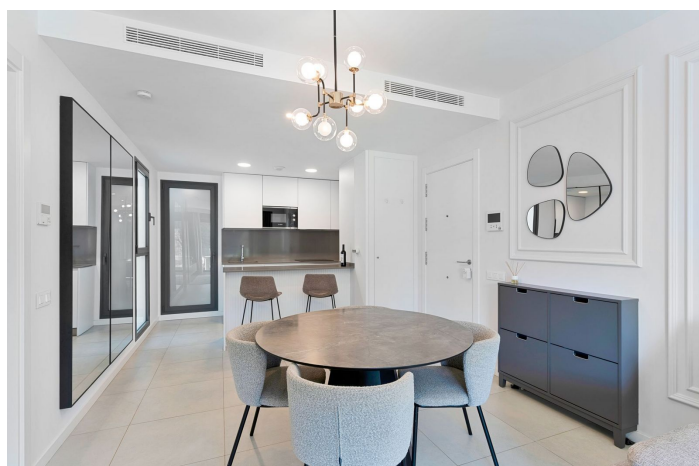
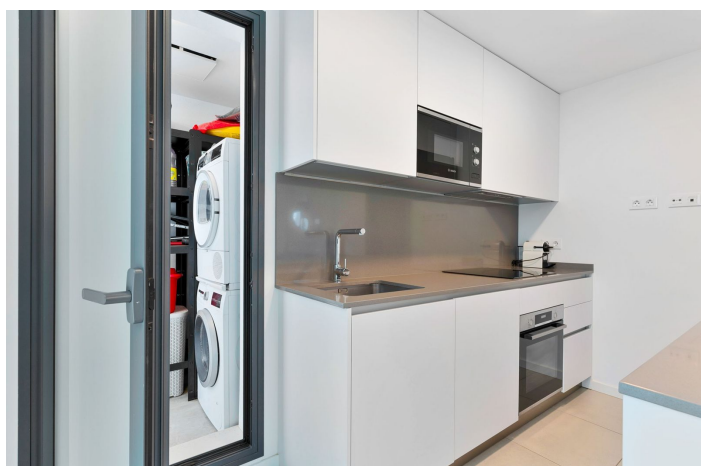
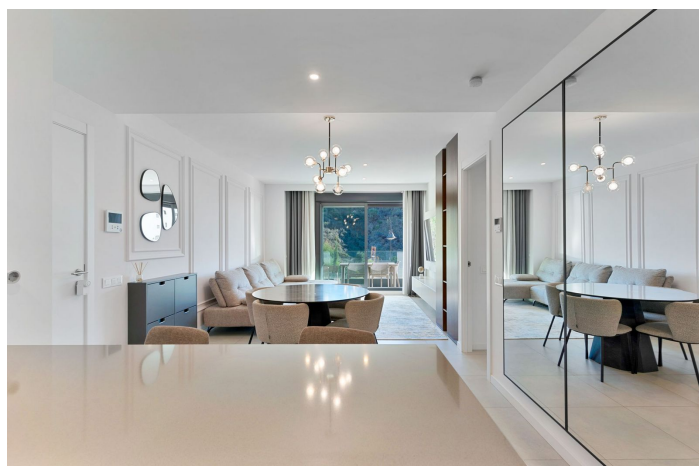




Middle Floor Apartment for sale in Reserva del Higuerón, Benalmádena

515,000 €

Reference: R5235487 Bedrooms: 2 Bathrooms: 2 Build Size: 98m² Terrace: 24m²





Costa del Sol, Reserva del Higuerón

Modern Beachside Apartment in Higuron – Fully Furnished, En-Suite, Parking & Pool

Introducing an exceptional opportunity to secure a high-end residence in one of Higuron's most desirable new developments. Completed in 2024 and offering 100 square meters of refined interior space, this elegant east-facing apartment is designed for discerning buyers seeking excellence in both lifestyle and investment potential.

From the moment you enter, the residence sets itself apart with contemporary architecture and unique interior design touches that give the home a distinct sense of style. The fully furnished interior combines premium materials with thoughtful detailing, creating a sophisticated atmosphere enhanced by natural morning light. The spacious open-plan living, dining and kitchen areas flow seamlessly, offering an ideal setting for day-to-day comfort, hosting guests or remote work.

The principal bedroom features a beautifully appointed en-suite bathroom, delivering privacy and comfort. The second bedroom is equally inviting, supported by a modern bathroom that reflects the same level of quality and design.

Located within walking distance of the beach, this property stands out as an exceptional choice for those seeking a perfect holiday home, a strong investment opportunity or a refined permanent residence. Residents enjoy exclusive access to premium amenities including a gym with sea views and an infinity swimming pool that offers amazing unobstructed sea views. Secure basement parking and a private storage room add further convenience.

Available immediately, this residence represents a rare blend of modern elegance, practicality and enduring value in the increasingly sought-after Higuron area.

A rare luxury offering in Higuron—secure this high-demand residence before it's gone.

Area Description:

Higuerón Area – Lifestyle, Luxury and Coastal Convenience

The Higuerón area is one of the Costa del Sol's most prestigious and fast-growing premium neighbourhoods, celebrated for its blend of modern luxury, natural beauty and exceptional connectivity. Set on an elevated position between Fuengirola and Benalmádena, Higuerón offers panoramic sea views, a refined residential atmosphere and easy access to some of the coast's finest beaches. It has become the preferred choice for international buyers seeking an upscale lifestyle with first-class services at their doorstep.

Higuerón is known for its meticulously planned communities, contemporary architecture and world-class facilities. The area boasts a renowned sports and wellness infrastructure, including high-end gyms, tennis and paddle courts, spa services, exclusive beach clubs and gourmet dining options. Its strong emphasis on wellbeing, security and modern living makes it a standout option for those who value comfort and convenience.

Residents benefit from excellent transport links, with direct access to the coastal highway and quick connections to Málaga Airport, the city centre and Marbella. Daily essentials—from supermarkets and cafés to boutique stores and medical centres are all within a short drive or walk, reinforcing the area's reputation for effortless, high-quality living.

Whether used as a full-time residence, a holiday retreat or a premium investment property, Higuerón offers long-term



value supported by growing demand, ongoing development and a reputation for luxury living. The combination of coastal proximity, sophisticated amenities and an international community makes Higuerón one of the most desirable and dynamic locations on the Costa del Sol.



Features:

Features

Covered Terrace
Near Transport
Private Terrace
Satellite TV
Storage Room
Fitted Wardrobes
WiFi
Gym

Views

Sea
Mountain
Panoramic

Pool

Communal

Security

Gated Complex
24 Hour Security
Electric Blinds
Entry Phone
Safe

Orientation

East

Setting

Close To Golf
Close To Port
Urbanisation
Close To Sea
Close To Shops
Close To Town
Close To Schools
Suburban

Furniture

Fully Furnished

Parking

Underground

Climate Control

Air Conditioning
Central Heating

Condition

Excellent
New Construction

Kitchen

Fully Fitted

Category

Holiday Homes
Investment
Luxury
Contemporary