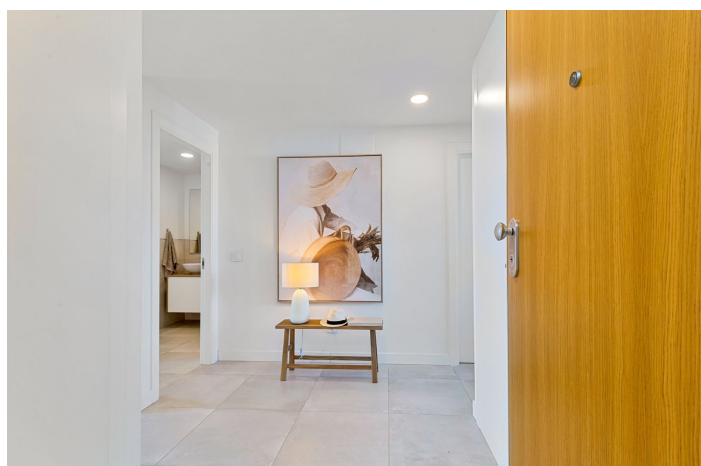
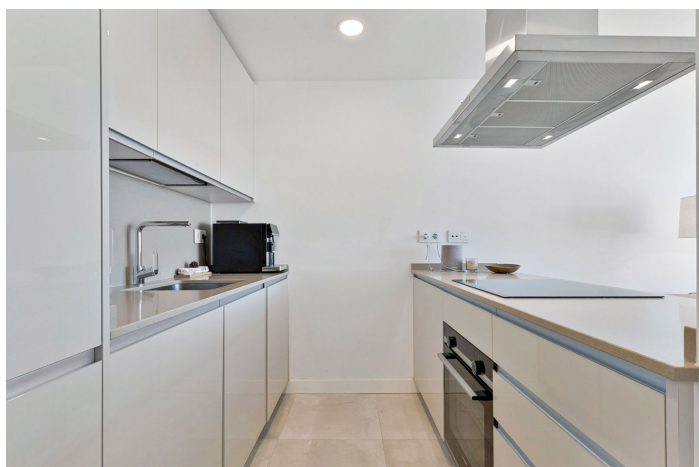




Top Floor Apartment for sale in Fuengirola, Fuengirola

645,000 €

Reference: R5241916 Bedrooms: 2 Bathrooms: 2 Build Size: 86m² Terrace: 16m²





Costa del Sol, Fuengirola

Modern 2-Bedroom Apartment with Sea Views – Reserva del Higuerón

This elegant 2-bedroom, 2-bathroom apartment is located on the border of Fuengirola and Benalmádena, within the popular Reserva del Higuerón community. Its excellent location near the Carvajal train station provides easy access to Fuengirola, Torremolinos, Málaga Airport and Málaga city centre, making it ideal for both permanent living and holidays.

Property Description

The apartment features two spacious bedrooms, and the master bedroom includes an en-suite bathroom with a modern walk-in shower. The open-plan kitchen flows naturally into the living room, creating a bright and comfortable space.

Large sliding doors lead from the living room onto a generous terrace. From here, you can enjoy impressive panoramic views of the Mediterranean Sea. The terrace offers plenty of space for dining, relaxing and enjoying the sun throughout the day.

Location

The property is situated in Reserva del Higuerón, a well-established residential area known for its high-quality facilities, wellness centre, sports club and excellent security. The Carvajal train station is only a short walk away and offers direct connections to nearby towns and to Málaga.

Distances:

Málaga city: 25 minutes

Málaga Airport: 20 minutes

Marbella: 25 minutes

Summary

A modern and stylish apartment with outstanding sea views, two comfortable bedrooms, open-plan living and a large terrace. Its combination of convenience, comfort and a privileged location makes it a great option for living, renting out or investing.



Features:

Features

Covered Terrace
Lift
Private Terrace
Storage Room
Ensuite Bathroom
Double Glazing
Fitted Wardrobes
Gym
Fiber Optic
Sauna

Views

Sea
Panoramic
Garden
Beach
Street

Pool

Communal
Children`s Pool

Garden

Communal

Utilities

Electricity
Photovoltaic solar panels

Orientation

West
South West

Setting

Close To Sea
Close To Shops

Furniture

Optional

Security

Gated Complex
24 Hour Security
Electric Blinds
Entry Phone

Category

Holiday Homes
Investment
Resale

Climate Control

Air Conditioning
Cold A/C
Hot A/C
U/F Heating
U/F/H Bathrooms
Central Heating

Condition

Excellent

Kitchen

Fully Fitted

Parking

Underground
Garage
Private
Communal
Covered