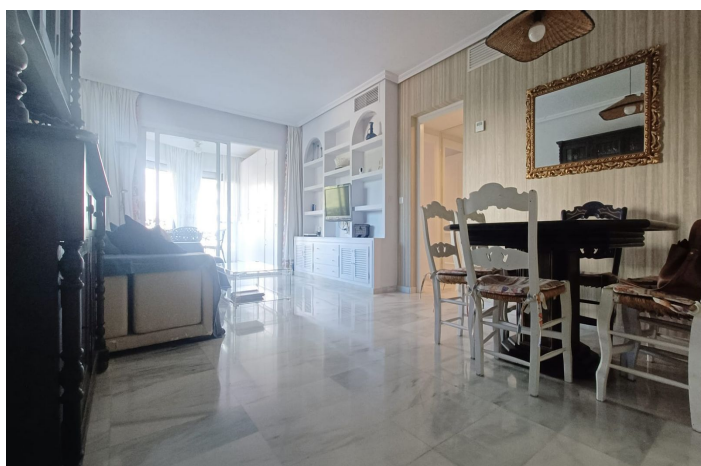




Middle Floor Apartment for sale in Puerto Banús, Marbella

560,000 €

Reference: R5256337 Bedrooms: 2 Bathrooms: 2 Build Size: 115m² Terrace: 8m²





Costa del Sol, Puerto Banús

EXCELLENT PROPERTY IN THE HEART OF PUERTO BANÚS

Beautiful flat. The complex is just a few metres from the promenade and the beach, with large garden areas, 4 swimming pools, 1 paddle tennis court and 24-hour security.

Surrounded by all the amenities offered by a unique location such as Puerto Banús, it is ideal for year-round living or summer holidays due to its good location and services.

The apartment is spacious, with 2 bedrooms, each with its own fitted wardrobe with loft space and new doors.

2 full bathrooms, both with showers, the main one en suite . Spacious living/dining room with access to a pleasant covered terrace enclosed with sliding glass doors, allowing it to be used in both winter and summer.

The property has undergone several improvements, which are detailed below:

The tap water is purified, so there is no need to use bottled water.

Both bathrooms have wall-mounted heaters.

Fitted wardrobes.

The walls facing the neighbouring property have 4 cm of soundproofing.

The window in the second bedroom has double glazing.

Extra window on the side of the living room, providing much more light than other similar apartments in the complex.

Painted in summer 2025.

Blinds on the terrace, one of which is electric.

Mosquito nets.

Satellite TV installation.

Sliding kitchen drawers and drawers in the lower plinth.

Only 9 neighbours to use the lift.

Appliances recently replaced.

Garage space included in the price.

It should be noted that the current owners have been the only owners of the property, hence its good condition.

A PERFECT PROPERTY for those who want to enjoy a place with all amenities close at hand.

)



Features:

Features

Covered Terrace
Lift
Near Transport
Private Terrace
Marble Flooring
Double Glazing
24 Hour Reception
Fitted Wardrobes
Paddle Tennis

Views

Garden

Pool

Communal
Garden
Communal

Category

Resale

Orientation

East

Setting

Commercial Area
Beachside
Urbanisation
Close To Shops
Close To Marina
Port

Furniture

Not Furnished

Security

Gated Complex
24 Hour Security

Climate Control

Air Conditioning
Cold A/C
Hot A/C

Condition

Good

Kitchen

Fully Fitted

Parking

Garage