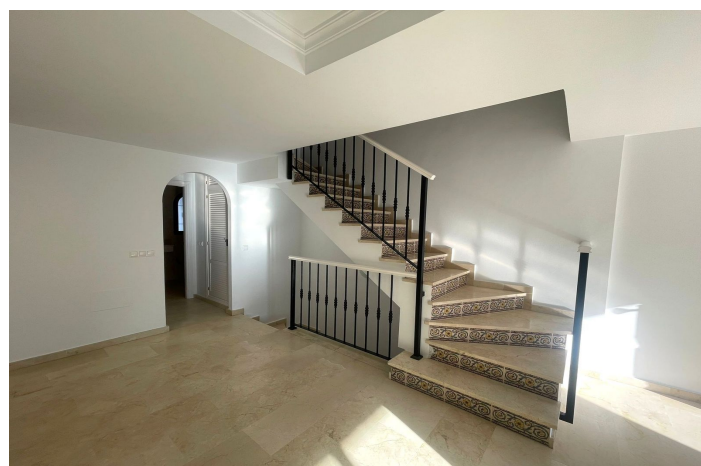
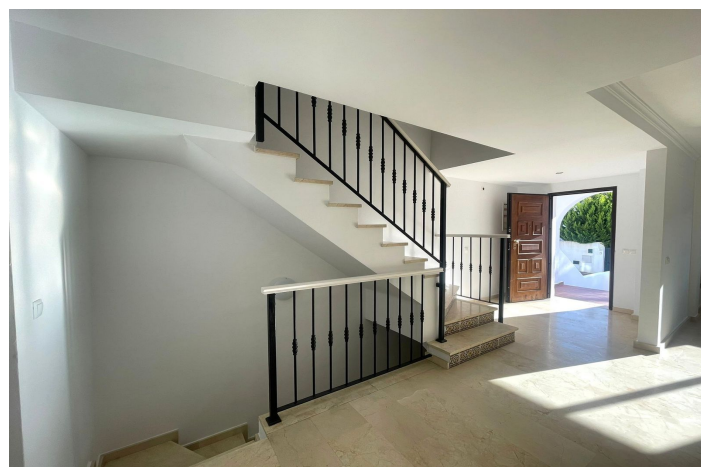




Semi-Detached House for sale in Manilva, Manilva

615,000 €

Reference: R5271679 Bedrooms: 3 Bathrooms: 3 Plot Size: 40m² Build Size: 225m² Terrace: 12m²





Costa del Sol, Manilva

Townhouse with Garden, Terraces, Triple Garage and Communal Pool

Beautiful townhouse offering 210 m² built, recently fully repainted, located in a quiet residential complex with communal swimming pool and very low community fees of only €30 per month.

The property is comfortably distributed and offers 3 spacious bedrooms and 3 bathrooms. All bedrooms feature fitted wardrobes, while the master bedroom benefits from a private dressing room. Two of the bedrooms enjoy private terraces of 5 m², perfect for outdoor relaxation.

The living area is one of the highlights of the property, with an impressive 45 m² living room with fireplace, creating a warm and elegant atmosphere ideal for everyday living and entertaining.

The kitchen is fully equipped with brand new stainless-steel appliances, combining modern design with practicality.

Outside, the property offers a private garden of 40 m², ideal for a chill-out area or outdoor dining space. Additional features include a 12 m² storage room, a wood storage area, and a major added value: three private garage spaces.

The urbanisation features a well-maintained communal swimming pool, making this property suitable as a permanent residence, holiday home or investment opportunity.

Key Features

210 m² built

3 bedrooms

3 bathrooms

Master bedroom with dressing room

Fitted wardrobes in all bedrooms

2 private terraces (5 m² each)

45 m² living room with fireplace

Fully equipped kitchen with new stainless-steel appliances

Private garden (40 m²)

Storage room (12 m²)

Wood storage area



3 garage spaces

Communal swimming pool

Community fees: €30 / month

Recently fully repainted



Features:

Features

Private Terrace
Storage Room
Ensuite Bathroom
Marble Flooring
Fitted Wardrobes

Views

Street

Pool

Communal

Parking

Garage
More Than One

Orientation

North
South

Setting

Urbanisation

Kitchen

Fully Fitted

Climate Control

Fireplace

Condition

Excellent

Garden

Private