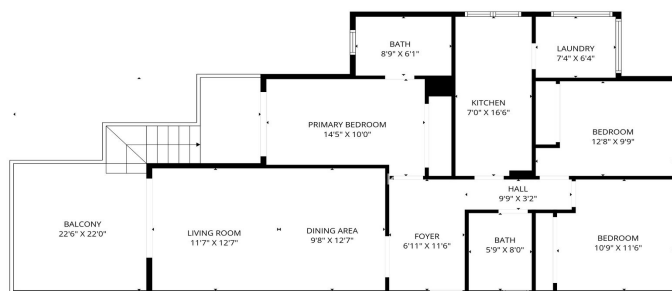
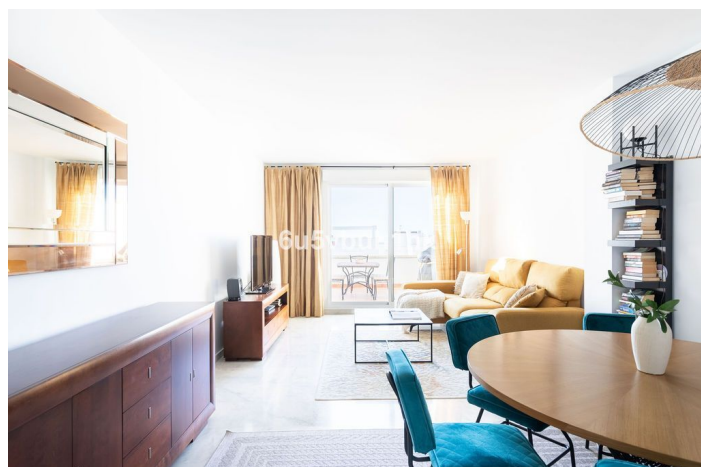




Penthouse for sale in Torrequebrada, Benalmádena

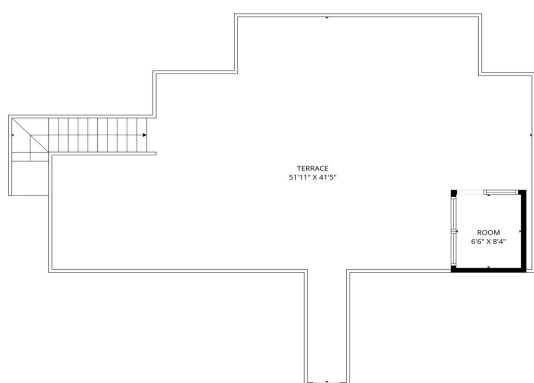
835,000 €

Reference: R5272009 Bedrooms: 3 Bathrooms: 2 Plot Size: 146m² Build Size: 146m² Terrace: 121m²



Strand Properties®

TOTAL: 1149 sq. ft.
1st floor: 1095 sq. ft., 2nd floor: 54 sq. ft.
EXCLUDED AREAS: BALCONY: 241 sq. ft., TERRACE: 1181 sq. ft., WALLS: 101 sq. ft.
FLOOR PLAN CREATED BY CIBERCA APP. REQUIREMENTS DOTTED HOUSING FILLABLE BUT NOT GUARANTEED.



Strand Properties®

TOTAL: 1149 sq. ft.
1st floor: 1095 sq. ft., 2nd floor: 54 sq. ft.
EXCLUDED AREAS: BALCONY: 241 sq. ft., TERRACE: 1181 sq. ft., WALLS: 101 sq. ft.
FLOOR PLAN CREATED BY CIBERCA APP. REQUIREMENTS DOTTED HOUSING FILLABLE BUT NOT GUARANTEED.





Costa del Sol, Torrequebrada

Set in the prestigious Torrequebrada area of Benalmádena, this refined penthouse offers an exceptional combination of elegance, privacy and an unrivalled coastal lifestyle, just moments from the Mediterranean. The residence comprises three generously proportioned bedrooms, a bright and elegant living and dining area, a separate fully equipped kitchen, two stylish bathrooms and a dedicated utility room, all thoughtfully designed to combine comfort with timeless sophistication. Crowning the home is an extraordinary rooftop terrace, where the palm treetops frame the space beautifully, creating a unique atmosphere of serenity and exclusivity. With open sea views, this expansive terrace is designed for both relaxation and entertaining, featuring a dining area, sun loungers, barbecue, jacuzzi and a private Finnish sauna — a rare and luxurious feature on the Costa del Sol. The penthouse is located within an exclusive, gated and impeccably maintained urbanisation, considered one of the most desirable in the area. Perfectly positioned between the sea and the Torrequebrada golf course, with public transport conveniently nearby, the location offers both tranquility and effortless connectivity. While the home enjoys a peaceful and private setting, the vibrant lifestyle of the surrounding area is just a short walk away. Multiple beaches, the casino, supermarkets, fine dining restaurants and charming cafés are all within easy reach. Close enough to enjoy the energy of the coast, yet elevated and secluded enough to preserve complete privacy. The scent of the sea accompanies everyday living. Additional features include a private underground parking space and access to a beautiful communal swimming pool area. A truly rare penthouse that embodies refined coastal luxury — where palm treetops, sea views and absolute privacy meet.



Features:

Features

Covered Terrace
Lift
Near Transport
Private Terrace
Ensuite Bathroom
Double Glazing
Fitted Wardrobes
Jacuzzi
Sauna

Views

Sea
Mountain
Panoramic
Country
Garden

Pool

Communal

Garden

Communal

Orientation

South

Setting

Beachside
Close To Golf
Close To Shops
Close To Town
Close To Schools

Furniture

Fully Furnished

Security

Gated Complex
24 Hour Security

Climate Control

Air Conditioning
Central Heating

Condition

Excellent

Kitchen

Fully Fitted

Parking

Underground
Communal