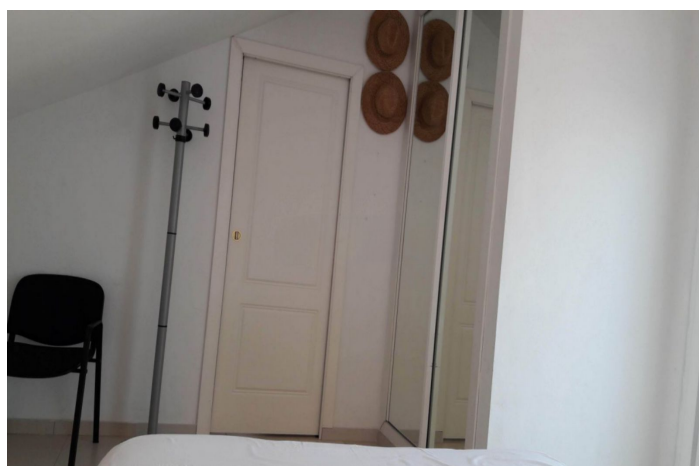




## Penthouse for sale in Benalmádena, Benalmádena

512,400 €

Reference: R5291992    Bedrooms: 4    Bathrooms: 2    Build Size: 167m<sup>2</sup>    Terrace: 20m<sup>2</sup>





---

## Costa del Sol, Benalmádena

Located in one of the most strategic and sought-after areas of Benalmádena Costa, Málaga, this exceptional four-bedroom duplex penthouse offers an unparalleled combination of luxury, a prime location, and attractive investment potential.

### Unbeatable Location

- Málaga Airport is just 15 minutes away.
- The property boasts exceptional connectivity, with easy access to Málaga city, Marbella, Puerto Banús, Gibraltar, and quick ferry access to Morocco.
- All essential services, including supermarkets, hospitals, international schools, and public transport, are within easy walking distance.
- Just 5 minutes from the best beaches on the Costa del Sol.

### A Home Designed for Comfort and Privacy

- Spacious terraces surround the property, offering breathtaking panoramic views of the sea, the mountains, and the exclusive Torrequebrada golf course, considered one of the best in Europe.
- The property is characterized by its brightness and welcoming spaces, with a smart layout and high-quality finishes.
- Absolute privacy is guaranteed in an exclusive residential setting.

### Unique Investment Opportunity

- The property offers a guaranteed return on investment, making it an ideal option for holiday rentals, given the high demand due to its proximity to beaches, golf courses, and leisure activities.
- It is perfect for families seeking security, premium services, and an exceptional quality of life.



## Features:

### Features

Lift  
Private Terrace  
Storage Room  
Marble Flooring  
Double Glazing  
Fitted Wardrobes

### Views

Sea  
Mountain

### Pool

Communal

### Parking

Underground

### Orientation

South

### Setting

Close To Golf  
Urbanisation  
Close To Sea  
Close To Schools

### Kitchen

Fully Fitted

### Utilities

Electricity  
Drinkable Water

### Climate Control

Air Conditioning

### Condition

Excellent

### Garden

Communal