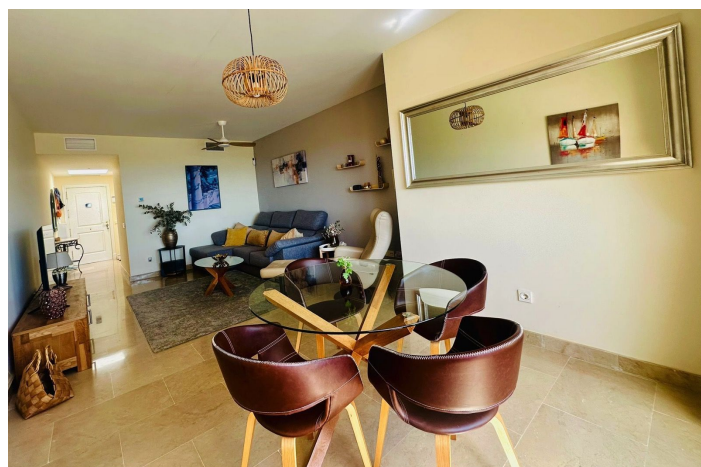




## Penthouse for sale in La Duquesa, Manilva

285,000 €

Reference: R5292157 Bedrooms: 2 Bathrooms: 2 Build Size: 120m<sup>2</sup> Terrace: 30m<sup>2</sup>





---

## Costa del Sol, La Duquesa

Stunning Penthouse with Panoramic Views in Duquesa Village, Manilva – Costa del Sol Elevate your lifestyle with this exclusive penthouse in the prestigious Duquesa Village urbanisation, a secure gated community in Manilva built between 2005 and 2007 in classic low-rise Andalusian style, renowned for its tranquil ambiance, lush green communal areas, and stunning vistas over La Duquesa Golf Course and the Mediterranean. Freshly renovated in June 2024, this south-facing property offers two spacious bedrooms with built-in wardrobes, two modern bathrooms, and a bright living room with direct access to a private terrace, plus two additional terraces capturing spectacular sea, golf, and mountain views at different times of the day – perfect for sunrise coffees or sunset gatherings. Sold fully furnished and ready to move in, it includes reversible air conditioning (hot/cold) for year-round comfort, two underground parking spaces, and a private storage room. The urbanisation boasts 24/7 security, five outdoor swimming pools for relaxed dips, beautifully manicured gardens, and a paddle tennis court, all just 2 km from the charming Puerto de la Duquesa marina with its array of restaurants, shops, and bars, and a short stroll to pristine beaches and golf facilities. Whether as a luxurious holiday escape, permanent residence, or savvy investment in this sought-after area between Estepona and Sotogrande, this penthouse promises an unparalleled blend of serenity and convenience on the Costa del Sol. Priced at €285,000 – a remarkable opportunity in this idyllic coastal haven!



## Features:

### Features

Covered Terrace  
Lift  
Private Terrace  
Storage Room  
Ensuite Bathroom  
Marble Flooring  
Double Glazing  
Fitted Wardrobes  
Utility Room  
WiFi  
Fiber Optic  
Solarium  
Tennis Court  
Paddle Tennis  
Access for people with reduced mobility

### Views

Sea  
Mountain  
Panoramic  
Garden  
Golf

### Pool

Communal  
Children`s Pool

### Garden

Communal

### Orientation

South

### Setting

Close To Golf  
Close To Port  
Urbanisation  
Close To Sea  
Close To Town  
Close To Schools  
Close To Marina  
Frontline Golf

### Furniture

Fully Furnished

### Security

Gated Complex  
24 Hour Security  
Alarm System

### Climate Control

Air Conditioning

### Condition

Excellent

### Kitchen

Fully Fitted

### Parking

Underground  
Garage  
Private  
More Than One  
Covered