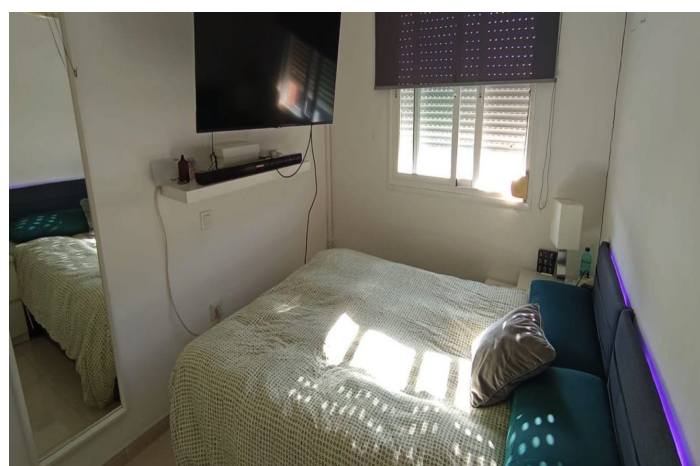
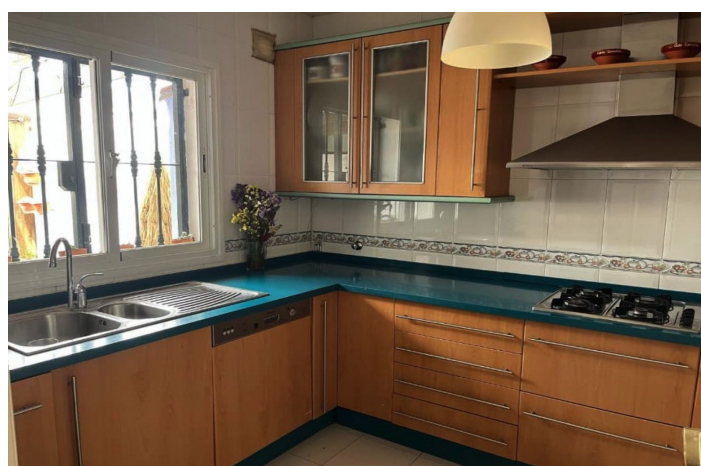




Townhouse for sale in Marbella, Marbella

550,000 €

Reference: R5294830 Bedrooms: 3 Bathrooms: 4 Build Size: 186m² Terrace: 80m²





Costa del Sol, Marbella

Discover this beautiful townhouse spanning 186 m² built area with 80 m² of terraces offering breathtaking views of the sea and mountains. Exceptionally spacious and filled with natural light, this property is situated in a peaceful residential area, just a few minutes from the beach and Marbella's vibrant centre, with excellent access to the A-7 motorway. Bello Horizonte, in Marbella East, blends suburban tranquillity with urban convenience, close to schools, hospitals, sports facilities, and renowned golf courses (approximately 5-6 km away), making it ideal for families or investors. Only 4 km from the sea, it's perfect for enjoying the Costa del Sol lifestyle. Layout: Ground Floor: 82 m² open-plan space with a full bathroom – versatile for a rental apartment with independent entrance, garage, studio, or games room. Private parking for two vehicles in front. First Floor: Expansive living room with fireplace and air conditioning, flooded with natural light, plus a 20 m² terrace; fully equipped kitchen, guest toilet, and another equally sized entrance terrace – perfect for al fresco dining in the mild climate. Second Floor: Three bedrooms and two bathrooms (one en-suite). Private Solarium: 40 m² rooftop with panoramic sea and mountain views, ideal for relaxation or converting into one or two additional bedrooms. Additional Features: Southwest orientation for optimal sunlight; low community fees of €27/month. This versatile home is perfect as a primary residence, holiday retreat, or investment with strong rental potential in this high-demand area. Priced at €550.000 – a versatile gem in sought-after Bello Horizonte!



Features:

Features

Covered Terrace
Near Transport
Private Terrace
Storage Room
Ensuite Bathroom
Marble Flooring
Double Glazing
Fitted Wardrobes
Utility Room
Fiber Optic
Solarium
Guest Apartment

Views

Sea
Mountain
Panoramic
Country
Garden

Furniture

Optional

Security

Gated Complex

Orientation

South
South West

Climate Control

Air Conditioning

Setting

Close To Golf
Urbanisation
Close To Sea
Close To Shops
Close To Town
Town

Kitchen

Fully Fitted

Parking

Garage
Private
More Than One
Covered

Condition

Good

Garden

Communal